



## D8000 SERIES USERS MANUAL



Version 1.1

## Table of Contents:

- 1.0 [Introduction](#)
- 2.0 [Configuration](#)
  - 2.1 [Getting Started](#)
- 3.0 [Communications](#)
  - 3.1 [RS-485 Serial](#)
- 4.0 [Module Types](#)
  - 4.1 [D8100 Seven Channel Voltage Input Module](#)
    - 4.1.1 [Analog to Digital Converter](#)
    - 4.1.2 [Connector Pin Assignments](#)
    - 4.1.3 [Factory Initial Values](#)
    - 4.1.4 [Features Register Assignments](#)
    - 4.1.5 [Calibration Procedure](#)
  - 4.2 [D8200 Seven Channel Current Input Module](#)
    - 4.2.1 [Analog to Digital Converter](#)
    - 4.2.2 [Connector Pin Assignments](#)
    - 4.2.3 [Factory Initial Values](#)
    - 4.2.4 [Features Register Assignments](#)
    - 4.2.5 [Calibration Procedure](#)
  - 4.3 [D8300 Seven Channel Thermocouple Module](#)
    - 4.3.1 [Analog to Digital Converter](#)
    - 4.3.2 [Connector Pin Assignments](#)
    - 4.3.3 [Factory Initial Values](#)
    - 4.3.4 [Features Register Assignments](#)
    - 4.3.5 [Calibration Procedure](#)
  - 4.4 [D8400 Seven Channel Voltage, Thermocouple, Current Input Module](#)
    - 4.4.1 [Analog to Digital Converter](#)
    - 4.4.2 [Features Register Assignments](#)
    - 4.4.3 [Factory Initial Values](#)
    - 4.4.4 [Calibration Procedure](#)
    - 4.4.5 [Connector Pin Assignments](#)
    - 4.4.6 [D8400 Current Channel Enable](#)
  - 4.5 [D8500 Two Channel Analog Output Module](#)
    - 4.5.1 [Analog Outputs](#)
    - 4.5.2 [Features Register Assignments](#)
    - 4.5.3 [Factory Initial Values](#)
    - 4.5.4 [Voltage Output Calibration Procedure](#)
    - 4.5.5 [Current Output Calibration Procedure](#)
    - 4.5.6 [Analog Output Calibration Register Tables and Values](#)
  - 4.6 [D8710 Fifteen Bit Digital Input Module](#)
    - 4.6.1 [Digital Inputs](#)
    - 4.6.2 [Connector Pin Assignments](#)
    - 4.6.3 [Factory Initial Values](#)
    - 4.6.4 [Features Register Assignments](#)
  - 4.7 [D8720 Fifteen Bit Digital Output Module](#)
    - 4.7.1 [Digital Outputs](#)
    - 4.7.2 [Connector Pin Assignments](#)
    - 4.7.3 [Factory Initial Values](#)
    - 4.7.4 [Features Register Assignments](#)
    - 4.7.5 [Communications Watchdog Timer](#)

## 5.0 [Modbus Protocol](#)

### 5.1.0 Functions

- 5.1.1 [Function 01](#) – Read Coil Status
- 5.1.2 [Function 02](#) – Read Input Status
- 5.1.3 [Function 03](#) – Read Holding Registers
- 5.1.4 [Function 04](#) – Read Input Registers
- 5.1.5 [Function 05](#) – Force Single Coil
- 5.1.6 [Function 06](#) – Preset Single Register
- 5.1.7 [Function 0F](#) – Force Multiple Coils
- 5.1.8 [Function 10](#) – Preset Multiple Registers
- 5.1.9 [Modbus Exception Error Codes](#)

## 6.0 [D8100 through D8400 Series Modbus Data Values](#)

- 6.1 Data Registers
- 6.2 Data Values

## 7.0 D8000 Series Specifications

**WARRANTY**

DGH warrants each D8000 series module to be free from defects in materials and workmanship under normal conditions of use and service and will replace any component found to be defective, on its return to DGH, transportation charges prepaid within one year of its original purchase. DGH assumes no liability, expressed or implied, beyond its obligation to replace any component involved. Such warranty is in lieu of all other warranties expressed or implied.

**WARNING**

The circuits and software contained in D8000 series modules are proprietary. Purchase of these products does not transfer any rights or grant any license to the circuits or software used in these products. Disassembling or decompiling of the software program is explicitly prohibited. Reproduction of the software program by any means is illegal.

As explained later in this document, all setups are performed entirely from the outside of the D8000 module. There is no need to open the module because there are no user-serviceable parts inside. Removing the cover or tampering with, modifying, or repairing by unauthorized personnel will automatically void the warranty. DGH is not responsible for any consequential damages.

**RETURNS**

When returning products for any reason, contact the factory and request a Return Authorization Number and shipping instructions. Write the Return Authorization Number on the outside of the shipping box. DGH strongly recommends that you insure the product for value prior to shipping. Items should not be returned collect as they will not be accepted.

**CONTACT INFORMATION**

DGH Corporation, USA.  
Corporate Offices  
Phone: (603) 622-0452  
Email: techsupport@dghcorp.com

**SHIPPING ADDRESS**

DGH Corporation  
350 Perimeter Road  
Manchester, NH 03103  
Attn: RMA# \_\_\_\_\_

## 1.0 Introduction

The D8000 series RS-485 serial interface modules are a complete family of data acquisition modules. The family of modules includes multi-channel analog input measurement modules, multiple channel analog output modules, and digital modules.

The D8000 series modules communicate using the Modbus RTU protocol. This protocol very popular in the data acquisition market and is supported by almost every commercial data acquisition program in the market today. Thus providing access to wide variety of software control programs that can meet almost any application budget.

The D8000 series analog input modules contain seven differential analog input channels and can measure voltages, current, and thermocouples. There are four versions available, the D8100, D8200, D8300 and the D8400. The D8100 module can measure DC voltage signals. The D8200 module can measure seven 4-20mA current loops. The D8300 series can measure eight user-selectable thermocouple types. The D8400 series can measure six selectable voltage input ranges, one current input range, and eight selectable thermocouple types.

The D8500 series analog output modules contain two output channels for generating either a voltage or current output signal. Each analog output channel is user-selectable as either a voltage or a current output. These analog output signals can be used as control inputs for items such as motor controls, valve controls, and other control devices. Each analog output channel also contains a programmable communications watchdog timer for instances when communications to the module is lost.

The D8700 series digital input and output modules each contain 15-bits of input or output. The digital input modules contain internal pull-ups on each bit for direct connection of dry contact switches. The digital outputs are open-collector outputs that can be connected up to 30Vdc and can sink 100mA per bit. The open-collector allows the modules to be used in a wider variety of control applications. The digital output module also contains a programmable watchdog timer for instances where communications to the module is lost.

Mixing and matching the D8000 series modules together in an application provides a user with all the measurement and control hardware for a complete process control system.

## 2.0 Configuration & Getting Started

### 2.1 Getting Started

#### Overview

The D8000 series modules require a DC Voltage power supply, a USB cable and an unused computer USB port for proper operation. Connecting the D8000 series modules to the USB port will create a virtual serial communications port on the computer. The serial port number can be found in the computer Device Manager. Use the information below in “Locate the Serial Port Number” section below to determine the new serial port number.

The D8000 series modules communicate through the virtual serial port using the Modbus RTU serial protocol, Modbus Slave Address of 0x01, at 9600 baud, no parity, eight data bits and one stop bit. Using the virtual serial port and the Modbus RTU protocol allows virtually any commercial data acquisition program to communicate with the module.

Setup information in a module may be changed at any time using the DGH D6000 series Utility Software. The software is distributed on CD ROM with each order and can be downloaded anytime at [www.dghcorp.com](http://www.dghcorp.com).

The D8000 series modules contain an EEPROM (Electrically Erasable Programmable Read Only Memory) to store setup information and calibration constants. The memory is nonvolatile which means that the information is retained even if power is removed.

#### Quick Start Steps:

1. Connect a +10-30Vdc voltage in between the +VS and GND terminals, Figure 1.0 below.
2. Plug one end of the USB cable into the connector on the module. Connect the other end of the USB cable into an unused port on the computer. Figure 1.0 below.
3. Then install the Utility Software on the computer to begin the module configuration process. See the “Software Installation” information below.

## Module Connections

The D8000 series module connects to a host computer using a USB 1.0 or 2.0 compatible cable. Plug one end of the cable into the module and the other end into an unused USB port on the host computer. **Note:** No connections are required on the analog or digital I/O pins to perform the module configuration.

**Figure 1.0** USB Cable connection to a host computer.

## Locate the Serial Port Number

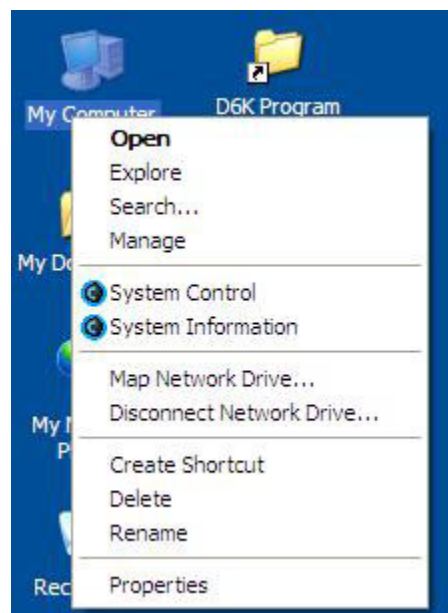
After the USB cable is plugged into the computer for the first time then a message will appear indicating that new hardware has been found. See Fig 2.0 below. The new hardware will be added as a virtual serial communications port, typically identified as “COMn:” where n is the port number. Follow the steps below to determine the new serial port number.



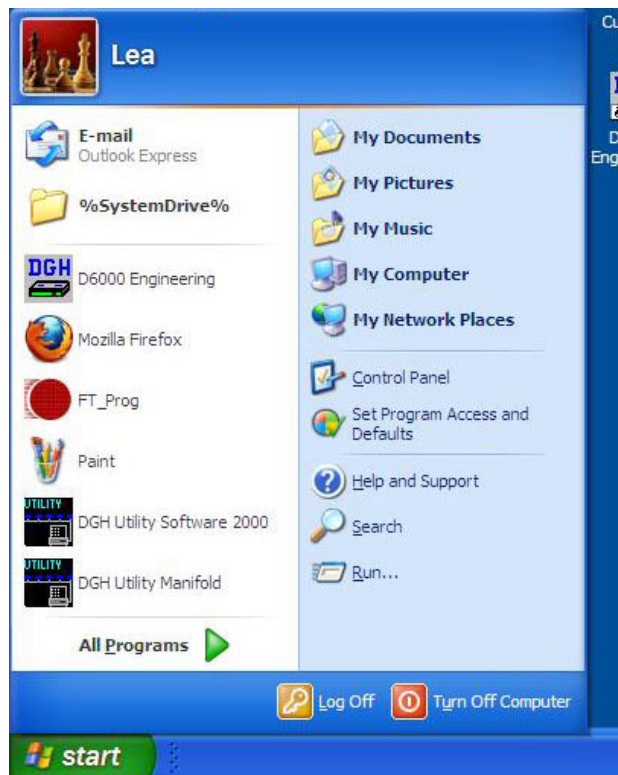
**Figure 2.0** D8000 series message indicating new hardware has been found.

### Locate Serial Port Number:

Open the computer Device Manager to determine the new serial port number. Open the Device Manager by either right-clicking on the “My Computer” desktop icon and select “Properties”. Or press the “Start” button in the lower left corner of the screen and click the “My Computer” link.

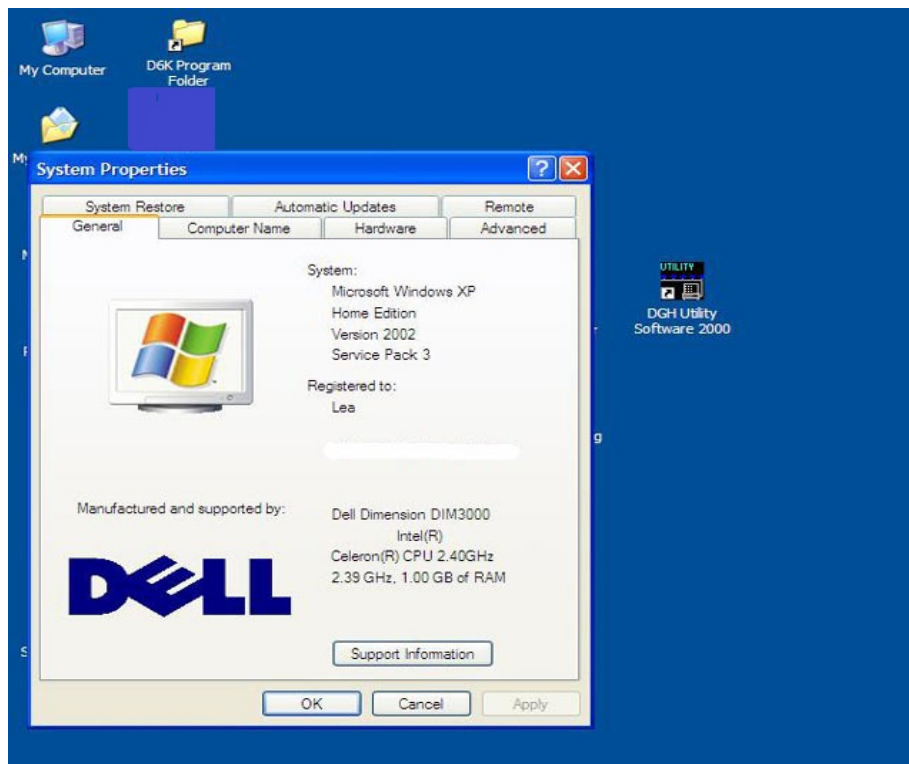


**Figure 3.0** Using My Computer Icon, right-click and select PROPERTIES.



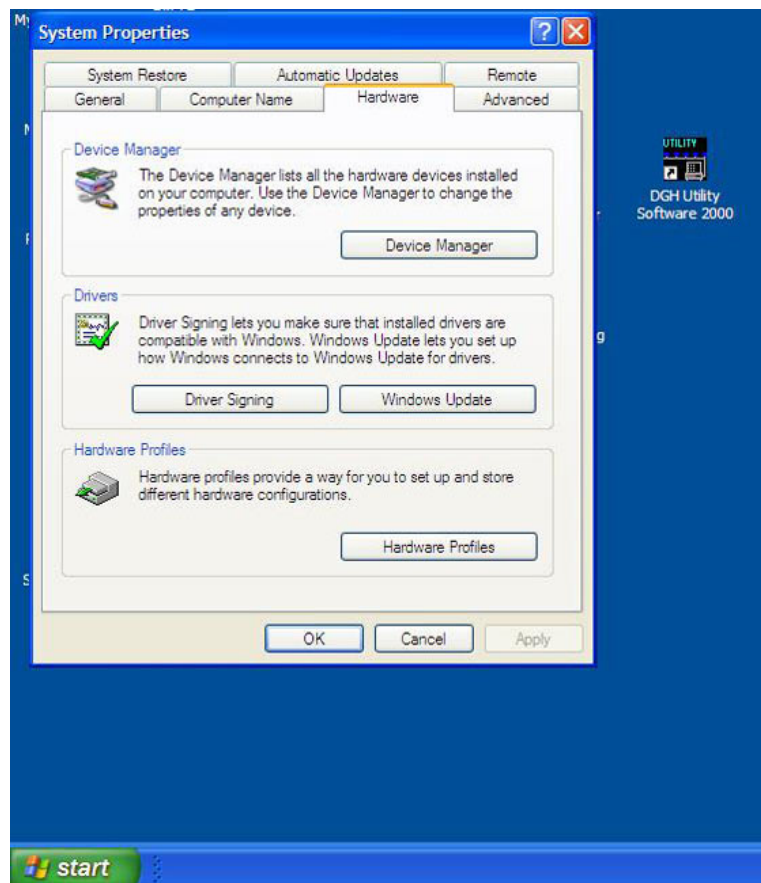
**Figure 4.0** Using the Start button and then click on My Computer.

The System Properties dialog screen will appear and select the “Hardware” tab and press the “Device Manager” button. See Figure 5.0 below.

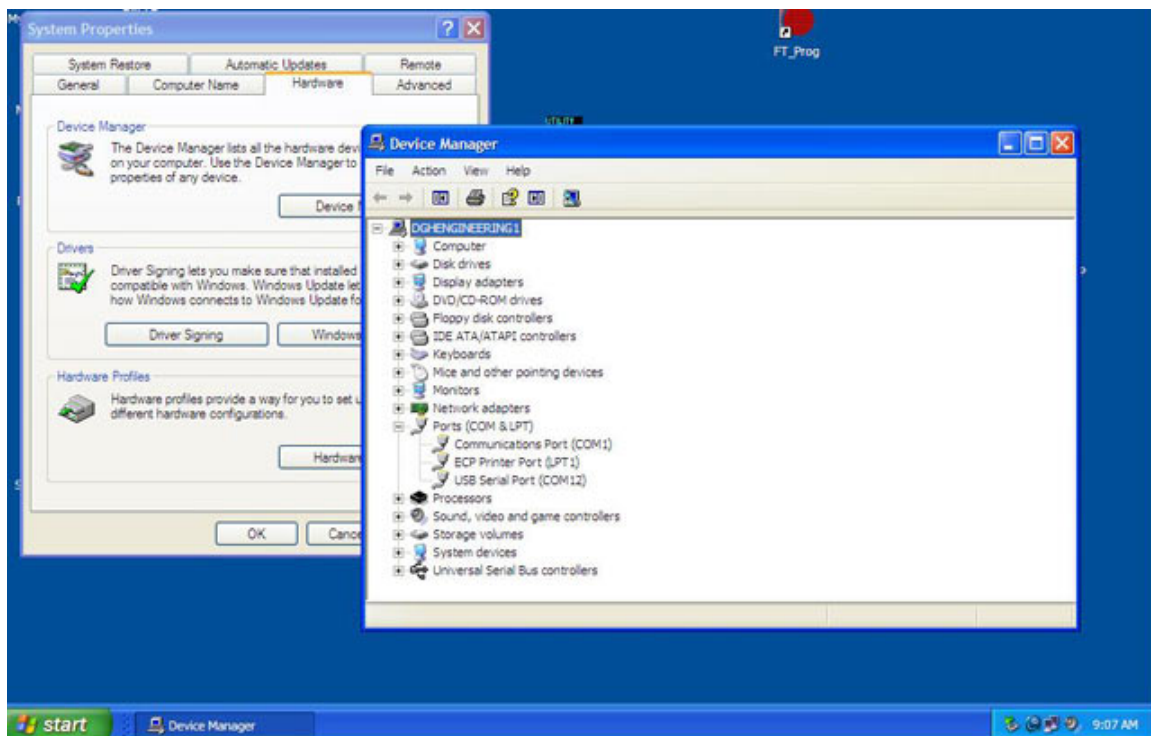


**Figure 5.0** My Computer System Properties dialog screen, select the Hardware tab.





**Figure 6.0** Click on the “Device Manager” button.



**Figure 7.0** Click on the + next to Ports (COM & LPT) and expand the ports tree.

The new serial port is listed under “Ports (COM & LPT)” in the Device Manager and will be designated as “USB Serial Port (COMn)” where n is the port number. See “USB Serial Port (COM12)” in Figure 7.0 above.

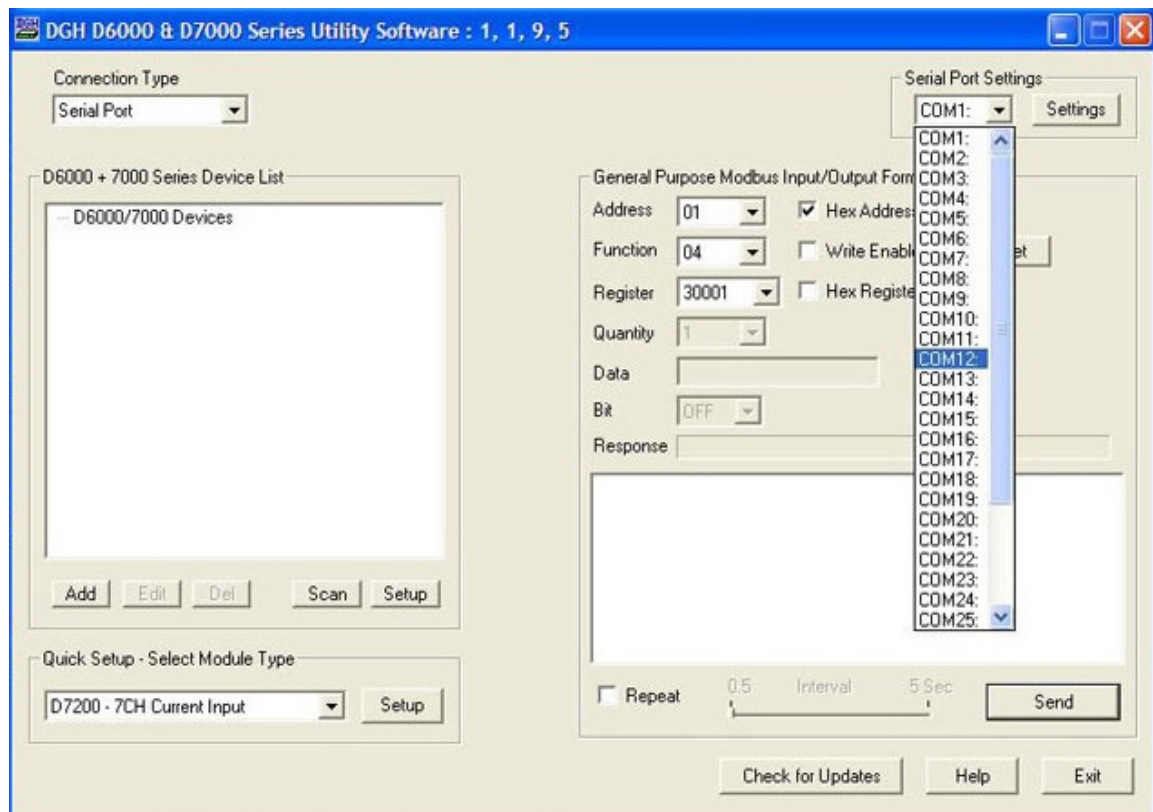
The serial port number is required to communicate with the D8000 using the Utility Software or other commercial data acquisition software. After locating the serial port number, install the Utility Software to make any setup adjustments such as analog input range selections. See “Software Installation” below.

## Software Installation

The DGH D6000 Series Utility Software is the best program to use when configuring a module. The utility software reads the existing module information, displays the information in easy to understand terms, allows changes to be made via drop-down list boxes and then writes the new values back to the module.

The Utility Software is provided free of charge on CDROM with a purchase order and the latest version is always downloadable from [www.dghcorp.com](http://www.dghcorp.com). The utility software runs on Windows based computers. Simply insert the CDROM into the CDROM drive, or download the Setup.Exe file from the website, and then run the SETUP.EXE installation file. The software will install and create a menu section called “DGH DATA ACQUISITION” and the Utility Software will be under that selection.

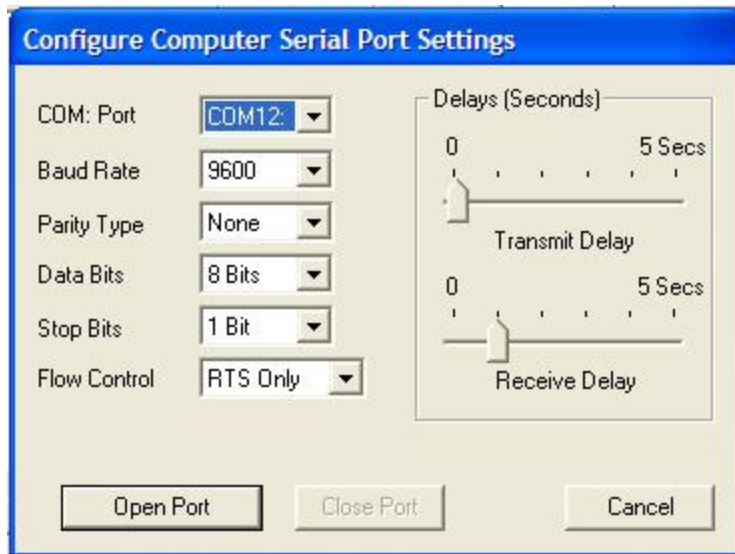
From the computer desktop select the “start” button, select “all programs”, select “DGH Data Acquisition” and then select “D6000 Series Utility Software” to run the utility software. A desktop icon is also available to start the program. When the software opens then the first step is to select, configure and open the serial communications port on the computer that the module is connected to.



**Figure 8.0** Utility Software main screen.

Select “Serial Port” in the upper left corner of the program screen. Then select the serial communications port in the upper right corner of the screen and press the “Settings” button.

On the Settings screen select 9600 baud, no parity, eight data bits, one stop bit, RTS Only handshaking and the Tx and Rx delays can be left in their default state.

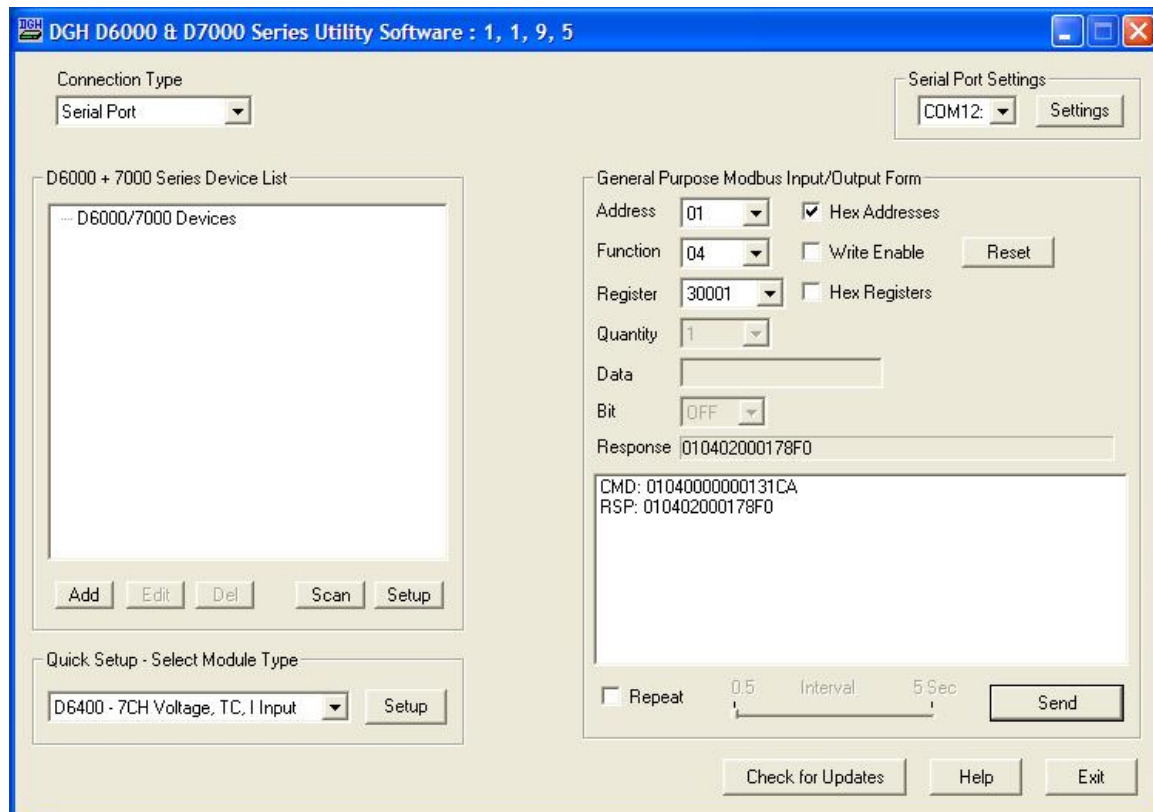


**Figure 9.0** Serial Port Settings screen.

Press the “Open Port” or “Update” button to complete the serial port configuration process.

## Test Communications

After the utility software serial port has been configured the next step would be to check for valid communications between the computer and the module. You must have valid communications with the module before trying to perform the configuration process. To test the communications set the Modbus Slave Address to 0x01. Set the Function selector to 03 and the Register selection to 40001. Press the “Send” button to verify communications. A typical module response is shown in the figure below.



**Figure 10.0** Utility Software main screen with typical Modbus response.

The figure above illustrates Modbus function 03 being sent to Slave address 01. Both the command and response messages are displayed. This command/response format is provided for troubleshooting purposes. It displays each byte of data being sent to and received from the module. This information be a good troubleshooting tool or a good way to become familiar with the Modbus RTU protocol.

The response data value from register 40001 is located in the RSP: line. The data value is a 16-bit value located in the fourth and fifth bytes in the message (00 01). The "00 01" indicates that the register value is 0001. Using the 7CH Current Input Modbus Register map, register 40001 is the Modbus Slave address. In this example the module slave address value is read back as 0001.

In the event that the module was not detected by the software then the RSP: line would say "RSP: Timeout – No Response Detected!". Several things may contribute to this problem. Some examples are no power to the module, bad RS-485 wiring connection(s), invalid port settings, or RS-485 half-duplex handshaking problems all can cause timeout errors. Timeout errors must be corrected before attempting to configure a module.

## Setup a Module

After a successful communications test has been performed then the module can be configured. Select the type of module using the drop-down list box under “Quick Setup” in the lower left hand corner of the screen. Then press the “Setup” button. A new screen (see below) will appear that contains list of all the user-selectable module values. The screen below is for a seven channel current input module.

DGH D6200 7CH Current Input Module Setup Screen

Connection Type: Serial Port

Serial Port Settings: COM12 Settings

Module Setup Configuration

Communications Settings

Slave Address: 01

Baud Rate: 9600

Parity: N-8-1

Modbus Delays

Query (HI): 00 mS

Response (LO): 03 mS

Version Data

Software: 0061

Save to Disk Recall from Disk

Channel Settings

NMR Setting: 60 Hz

Small Filter: 0 Secs

Large Filter: 0 Secs

Ch1 Range: +/-20mA

Ch2 Range: +/-20mA

Ch3 Range: +/-20mA

Ch4 Range: +/-20mA

Ch5 Range: +/-20mA

Ch6 Range: +/-20mA

Ch7 Range: +/-20mA

Set All Ranges Equal to CH1

Analog Data Values

Chan	Valley (LO)	Data	Peak (HI)
#1	0000	0000	0000
#2	0000	0000	0000
#3	0000	0000	0000
#4	0000	0000	0000
#5	0000	0000	0000
#6	0000	0000	0000
#7	0000	0000	0000

Clear LO Scan Clear HI

0.5 Interval (Sec) 5

Calibrate Module

Communications Status: 0103020000

Slave Address: 01 Hex Addressing Hex Data

Read Setup Apply Setup Help Close

**Figure 11.0** D8000 series analog input module configuration screen.

Ensure that the Module Address in the lower left corner is 01, the proper serial port is selected in the upper right corner of the screen and press the “Read Setup” button. The screen will now populate using the configuration data read from the module.

The user-selectable values are displayed in an easy to understand format and new selections can be made using the drop-down list boxes. The drop-down list boxes make the configuration process easy and accurate because erroneous values cannot be entered.



**DGH D6200 7CH Current Input Module Setup Screen**

Connection Type: Serial Port

Serial Port Settings: COM12

**Module Setup Configuration**

**Communications Settings**

Slave Address: 01

Baud Rate: 9600

Parity: N-8-2

**Modbus Delays**

Query (HI): 00 mS

Response (LO): 00 mS

**Version Data**

Software: 0000

**Channel Settings**

NMR Setting: 60 Hz

Small Filter: 0 Secs

Large Filter: 0 Secs

Ch1 Range: +/-20mA

Ch2 Range: +/-20mA

Ch3 Range: +/-20mA

Ch4 Range: +/-20mA

Ch5 Range: +/-20mA

Ch6 Range: +/-20mA

Ch7 Range: +/-20mA

Set All Ranges Equal to CH1

**Analog Data Values**

Chan	Valley (LO)	Data	Peak (HI)
#1	-0.00	-0.00	-0.00
#2	-0.00	-0.00	-0.00
#3	-0.00	+0.00	+0.00
#4	-0.00	-0.00	-0.00
#5	-0.00	+0.00	+0.00
#6	-0.00	-0.00	+0.00
#7	-0.00	-0.00	-0.00

Clear LO Scan Clear HI

Interval (Sec): 0.5 to 5

Calibrate Module

Communications Status: 0103027FFF

Slave Address: 01 ☒ Hex Addressing ☐ Hex Data

Read Setup Apply Setup Help Close

**Figure 12.0** D8000 series analog input module configuration screen with values.

After the settings have been changed to meet the application requirements then press the “Apply” button to transmit the new values.

## Scan Module Data Values

After the module has been properly configured, the analog input data values can be read from each channel. This feature is a good troubleshooting or verification tool and should only be used when valid analog input signals are connected to the module.

Press the “Scan” button to enable the scanning process. Each channel value is read from data registers within the module. The analog input module data registers can be found in the Modbus Register map. Each module has its own specific Modbus Register map.

The analog data values are returned in unsigned integer hexadecimal percentage of Full Scale format where a value of 0x0000 represents the minus full scale input of the module range. A value of 0xffff represents the positive full scale input of the module range. These values can be viewed to check that each channel is operating properly when analog signals are applied to the input terminals.

The analog data values can be displayed as a numerical values. The utility software knows the plus and minus full scale input range for each channel. The software can convert the raw data values to millivolts, milliamps, or temperature readings. Simply uncheck the “Display Hex Values” selection underneath the channel readings to display the numeric values.

The scanning process will also log and display the highest (peak) and lowest (valley) readings that were recorded during the scanning process. This is just for indication purposes only.

Once the setup process is completed then the D8000 is ready to be installed into the application.

### **3.0 Communications**

Each D8000 series module contains USB serial interface for communications. The USB interface will appear on the host computer as a serial communications port. The serial communications port number can be found by checking the “Ports and LPT” values in the Windows computer device manager. Each D8000 series module that is connected will create a unique serial port on the computer.

The Modbus RTU serial protocol is used to communicate with each module. The Modbus RTU serial protocol is widely recognized in the data acquisition industry and supported by almost all commercial data acquisition software programs. Thus providing instant connectivity to a wide variety of programs.



## 4.0 Module Types

The D8000 series RS-485 serial interface modules are a complete family of data acquisition modules. Mixing and matching the D8000 series modules together in an application provides a user with all the measurement and control hardware to build a complete process control system. The family of modules includes multi-channel analog input measurement modules, multiple channel analog output modules, and digital modules.

### D8100 Voltage Input Module

The [D8100](#) series analog input modules contain seven differential inputs for measuring DC voltages. Each input can be individually configured to measure one of six different voltage ranges. The input ranges are:  $\pm 0.025\text{V}$ ,  $\pm 0.05\text{V}$ ,  $\pm 0.10\text{V}$ ,  $\pm 1\text{V}$ ,  $\pm 5\text{V}$  and  $\pm 10\text{V}$ .

### D8200 Current Input Module

The [D8200](#) series analog input module contains seven differential inputs for measuring current signals such as 4-20mA loops. The analog input range is factory configured for  $\pm 20\text{mA}$ .

### D8300 Thermocouple Input Module

The [D8300](#) series analog input module contains seven differential inputs for measuring thermocouple probes. Each input can be individually configured to measure one of eight different thermocouple types. The supported thermocouple types are: J, K, T, E, R, S, B and C.

### D8400 Voltage, Thermocouple and Current Input Module

The [D8400](#) series analog input module contains seven differential inputs for measuring DC voltages, thermocouples and current. Each input can be individually configured to measure one of fourteen different ranges. The supported thermocouple types are: J, K, T, E, R, S, B and C. The DC voltage input ranges are:  $\pm 0.025\text{V}$ ,  $\pm 0.05\text{V}$ ,  $\pm 0.10\text{V}$ ,  $\pm 1\text{V}$ ,  $\pm 5\text{V}$  and  $\pm 10\text{V}$  and the current input range is  $\pm 20\text{mA}$ .

### D8500 Analog Output Module

The [D8500](#) series analog output modules contain two analog output channels for generating either a voltage or current output signal. Each analog output channel contains two user-selectable voltage output ranges and two current output ranges. These analog output signals can be used as control inputs for items such as motor controls, valve controls, and other control devices. Each analog output channel also contains a programmable communications watchdog timer for instances when communications to the module is lost.

### D8700 Digital Inputs/Output Module

The [D8700](#) series modules each contain 15-bits of digital inputs or digital outputs. The D8710 15-bit digital input module contains internal pull-ups on each bit for direct connection to dry contact switches.

The D8720 digital output modules contain fifteen open-collector outputs that can be connected up to 30Vdc and can sink 100mA per bit. The open-collector outputs allow the modules to be used in a wide variety of control applications. The digital output module also contains a programmable communications watchdog timer for accidental instances where communication to the module is lost.

## 4.1 D8100 - Seven Channel Voltage Input Module

### Overview

The D8100 series analog input modules contain seven differential analog inputs that can measure six different DC voltage ranges. Each analog input channel is user programmable and may be assigned to measure a different range. Any unused channels can be disabled.

### Analog to Digital Converter

The D8100 series analog input modules contain a 16-bit analog to digital converter to perform the signal conversion to digital information. The analog to digital converter performs a total of 25 conversions per second. Meaning, if all 7 channels were enabled the each channel would be measured 3+ times per second. The conversion rate per channel can be improved by disabling any unused channels.

### Features and Register Assignments

The D8100 series analog input modules contain many user-selectable features. The user can select all features such as baud rate, parity type, analog range selection and digital filtering. The complete list of features is illustrated in the [“Seven Analog Voltage Input Register Assignments”](#) register map below. The register map format is used for consistency with the Modbus RTU protocol. The register map contains the register numbers in decimal format, register description, acceptable data values, and list of what each value means. These registers can be written to using most any Modbus master program or using the DGH D8000 series utility software.

**Note:** All Modbus Register values in the tables below are represented as “decimal” numbers.

### Analog Data Values

The D8100 series analog input modules contain seven analog channels and the data values are each stored in registers to be read by the Modbus RTU protocol. The analog data values can be read using either Function 03 or Function 04. For discussion purposes - we will use the Function 03 register values when referring to the location of the analog data values. The first analog input data register is located at register 40049 and there are seven consecutive registers (40049..40055) that contain data values. See Chapter #6 for analog data scaling examples.

### Factory Initial Values

The D8100 series analog module features are initialized at the factory with a set of “Initial Values”. A complete list of factory [“Initial Values”](#) can be found in the table below. For reference purposes, the Modbus Slave address is preset to hex 0x01, the baud rate is 9600, Parity type is None and the Stop Bits is “1”.

### Calibration

The D8100 series analog input modules are shipped from the factory as fully calibrated devices. Throughout the lifetime of the module there may be need to verify or adjust the calibration of the device. The verification and adjustment process should only be completed using NIST traceable calibration equipment. A D8100 series [Calibration procedure](#) is included below.

### Connector Pin Designations

The D8100 series module uses two 3.81mm removable plugs for connecting signals to the module. One six-pin connector is for the power supply and the second sixteen-pin connector is used to connect analog input signals to the module. The [pin designations](#) for each connector are printed on the module label and are listed in a table below.

#### 4.1.2 Seven Voltage Input Pin Assignments and Specifications

##### Connections

##### Power & Serial Communications

<u>Pin Number</u>	<u>Pin</u>	<u>Designator</u>
1	GND	- Power Supply
2	+VS	+ Power Supply

##### Specifications

Analog Inputs 7 Channels

User Selectable Input Ranges  
Bipolar Voltage 10V, 5V, 1V,  
0.1V, 0.05V,  
0.025V

##### Analog Input Pin Assignments

<u>Pin Number</u>	<u>Pin</u>	<u>Designator</u>
1	CH1+	CH1 +Input
2	CH1-	CH1 -Input
3	CH2+	CH2 +Input
4	CH2-	CH2 -Input
5	CH3+	CH3 +Input
6	CH3-	CH3 -Input
7	CH4+	CH4 +Input
8	CH4-	CH4 -Input
9	CH5+	CH5 +Input
10	CH5-	CH5 -Input
11	CH6+	CH6 +Input
12	CH6-	CH6 -Input
13	CH7+	CH7 +Input
14	CH7-	CH7 -Input
15	ISO. GND	Isolated GND
16	ISO. GND	Isolated GND

Differential Reading  
CH to CH

Protocol  
Serial Modbus RTU

Power Supply  
Voltage +10-30Vdc  
Power 1.4W

Connectors  
Spacing 3.81mm  
Max Wire Size 14-24 AWG  
Max Current 8 Amperes

Serial LED Displays  
Transmit (Top) Serial TxData  
Receive (Bottom) Serial RxData

#### 4.1.3 Seven Voltage Input Initial Values

Module Parameter	Value
Slave Address	1
Modbus Response Delay	3mS
Modbus Query Delay	0mS
Conversion Rate	60Hz
Large Signal Filter	0 Seconds
Small Signal Filter	0 Seconds
Channel 0 Range	+/-10Vdc
Channel 1 Range	+/-10Vdc
Channel 2 Range	+/-10Vdc
Channel 3 Range	+/-10Vdc
Channel 4 Range	+/-10Vdc
Channel 5 Range	+/-10Vdc
Channel 6 Range	+/-10Vdc

#### 4.1.4 Seven Voltage Input Register Assignments

Register	Description	Function	Value	Description
40001	Slave Address	R/W	1-DF	Factory set to 0x0001.
40002	UART Setup	R/W		<b>Factory set to 0x0035.</b>
40003	Modbus Delays	R/W	0-303F	<p><u>Bits 0-7</u> The Response Delay in milliseconds. This is required when the RS-485 adapter cannot tri-state immediately after the last character is transmitted from the host. Maximum value is 63mS. Factory default value is 3.</p> <p><u>Bits 8-15</u> The End of Query Delay in milliseconds (48mS max). This is an additional time that the module will wait prior to marking the end of the message. Slower host computers may not be able transmit a continuous message stream, thereby creating gaps between characters exceeding the normal 3.5 character times limit. Factory default value is 0. <b>Factory set, 0x0003.</b></p>
40033	Software Version	R		Factory set, Code Version.
40048	Last Converted Chan, Conversion Counter	R	0-06FF	<p><u>Bits 0-7</u> The counter increments each conversion and rolled over after FF. The Conversion Counter indicates when the data registers have been updated.</p> <p><u>Bits 8-10</u> Input channel last conversion stored. The information is useful when all channel data is read back with 1 query. The user can identify which channels have been converted since the last query as long as the time between queries is less than 8 conversion times. Initialized to '0x0000' on device reset.</p>
40049	Channel 0 Data	R	0-FFFF	Data - Ch 0, Offset binary, zero=0x8000.
40050	Channel 1 Data	R	0-FFFF	Data - Channel 1
40051	Channel 2 Data	R	0-FFFF	Data - Channel 2
40052	Channel 3 Data	R	0-FFFF	Data - Channel 3
40053	Channel 4 Data	R	0-FFFF	Data - Channel 4
40054	Channel 5 Data	R	0-FFFF	Data - Channel 5
40055	Channel 6 Data	R	0-FFFF	Data - Channel 6

40095	Misc. Setup	R/W	0-1	<u>Bit 0</u> – Normal Mode Rejection Setting 0 – 60Hz, 25 Hz Conversion Speed. 1 – 50Hz, 20 Hz Conversion Speed. <b>Factory set to 0x0000.</b>																														
40096	Signal Filtering	R/W	0-3F	This register controls all channels. Time constants are only approximate values. <table><tr><th><u>Bits 0-3</u></th><th><u>Small Filter Time Constant(Secs)</u></th></tr><tr><td>0</td><td>0</td></tr><tr><td>1</td><td>0.5</td></tr><tr><td>2</td><td>1</td></tr><tr><td>3</td><td>2</td></tr><tr><td>4</td><td>4</td></tr><tr><td>5</td><td>8</td></tr><tr><td>6</td><td>16</td></tr><tr><td>7</td><td>32</td></tr></table> <table><tr><th><u>Bits 4-7</u></th><th><u>Large Filter Time Constant(Secs)</u></th></tr><tr><td>0</td><td>0</td></tr><tr><td>1</td><td>0.5</td></tr><tr><td>2</td><td>1</td></tr><tr><td>3</td><td>2</td></tr><tr><td>4-7</td><td>Reserved</td></tr></table> <b>Factory set to 0x0000.</b>	<u>Bits 0-3</u>	<u>Small Filter Time Constant(Secs)</u>	0	0	1	0.5	2	1	3	2	4	4	5	8	6	16	7	32	<u>Bits 4-7</u>	<u>Large Filter Time Constant(Secs)</u>	0	0	1	0.5	2	1	3	2	4-7	Reserved
<u>Bits 0-3</u>	<u>Small Filter Time Constant(Secs)</u>																																	
0	0																																	
1	0.5																																	
2	1																																	
3	2																																	
4	4																																	
5	8																																	
6	16																																	
7	32																																	
<u>Bits 4-7</u>	<u>Large Filter Time Constant(Secs)</u>																																	
0	0																																	
1	0.5																																	
2	1																																	
3	2																																	
4-7	Reserved																																	
40097	Setup Channel 0	R/W	0-F	Channel 0 range. Non-volatile write protected register. If the EEPROM cannot be written because of not being enabled, it replies with a Negative Acknowledge Exception response 07h. Modbus function code 10h is limited to 4 data values. <table><tr><th><u>Range:</u></th><th><u>Bits 0-7 Hex</u></th></tr><tr><td>Disable Channel</td><td>00</td></tr><tr><td>+/-10V</td><td>01</td></tr><tr><td>+/-5V</td><td>02</td></tr><tr><td>+/-1V</td><td>03</td></tr><tr><td>+/-0.100V</td><td>04</td></tr><tr><td>+/-0.050V</td><td>05</td></tr><tr><td>+/-0.025V</td><td>06</td></tr></table> <b>Factory set to 0x0001.</b>	<u>Range:</u>	<u>Bits 0-7 Hex</u>	Disable Channel	00	+/-10V	01	+/-5V	02	+/-1V	03	+/-0.100V	04	+/-0.050V	05	+/-0.025V	06														
<u>Range:</u>	<u>Bits 0-7 Hex</u>																																	
Disable Channel	00																																	
+/-10V	01																																	
+/-5V	02																																	
+/-1V	03																																	
+/-0.100V	04																																	
+/-0.050V	05																																	
+/-0.025V	06																																	
40098	Setup Channel 1	R/W	0-F	Holds Channel 1 range. <b>Factory set to 0x0001.</b>																														
40099	Setup Channel 2	R/W	0-F	Holds Channel 2 range. <b>Factory set to 0x0001.</b>																														
40100	Setup Channel 3	R/W	0-F	Holds Channel 3 range. <b>Factory set to 0x0001.</b>																														
40101	Setup Channel 4	R/W	0-F	Holds Channel 4 range. <b>Factory set to 0x0001.</b>																														
40102	Setup Channel 5	R/W	0-F	Holds Channel 5 range. <b>Factory set to 0x0001.</b>																														
40103	Setup Channel 6	R/W	0-F	Holds Channel 6 range. <b>Factory set to 0x0001.</b>																														
40114	Trim Zero, 10V Range	WP	0	Forces all Channel Data Registers to 8000h, with input signal equal to zero. Apply calibration signal at least 15 seconds prior to calibrating to all channels. Calibration Acknowledge Exception Response. Calibration takes 20 seconds.																														
40115	Trim Zero, 5V Range	WP	0	Refer to Modbus register 40114.																														
40116	Trim Zero, 1V Range	WP	0	Refer to Modbus register 40114.																														
40117	Trim Zero, 0.1V	WP	0	Refer to Modbus register 40114. Apply																														

	Range			calibration signal at least 1 minute prior to calibrating to all channels.
40118	Trim Zero, 0.05V Range	WP	0	Refer to Modbus register 40114. Apply calibration signal at least 1 minute prior to calibrating to all channels.
40119	Trim Zero, 0.025V Range	WP	0	Refer to Modbus register 40114. Apply calibration signal at least 1 minute prior to calibrating to all channels.
40146	Trim FS, 10V Range	WP	D000-FFFE	Forces all Channel Data Registers to written value, with appropriate input signal. Apply calibration signal at least 15 seconds prior to calibrating to all channels. Acknowledge Exception Response. Calibration takes 20 seconds. See note 1.
40147	Trim FS, 5V Range	WP	D000-FFFE	See Modbus Register 40146.
40148	Trim FS, 1V Range	WP	D000-FFFE	See Modbus Register 40146.
40149	Trim FS, 0.1V Range	WP	D000-FFFE	See Modbus Register 40146. Apply calibration signal at least 1 minute prior to calibrating to all channels.
40150	Trim FS, 0.05V Range	WP	D000-FFFE	See Modbus Register 40146. Apply calibration signal at least 1 minute prior to calibrating to all channels.
40151	Trim FS, 0.025V Range	WP	D000-FFFE	See Modbus Register 40146. Apply calibration signal at least 1 minute prior to calibrating to all channels.
<b>40241</b>	<b>Control Register</b>	W		<b>0</b> – Normal operation (NOP) <b>1</b> – Remote Reset (write protected) <b>2</b> – Write Enable <b>5</b> – Initialize Host Communication setup

**Functions:**

R        Read Only  
R/W     Read/Write  
WP      Write-Protected

#### 4.1.5 Seven Channel Voltage Input Module Calibration Procedure

##### Required Equipment:

1. Computer running the DGH Utility Software or another Modbus Master program.
2. A NIST traceable DC Voltage Standard with +/-10Vdc range.

##### Setup Steps – Perform Calibration Steps in Order Listed:

1. Allow unit to warm up for 15 minutes.
2. Short all the +Input pins together using short jumper wires.
3. Short all the -Input pins together using short jumper wires.
4. Connect the +Input wires to the Positive terminal on the DC voltage calibrator.
5. Connect the -Input wires to the Negative terminal on the DC voltage calibrator.
6. Install the DGH Utility Software or another Modbus Master Program to communicate with, and calibrate with the module via serial port or a TCP/IP connection.

##### Trim Zero:

1. Set the DC calibrator voltage output to +0.0000Vdc.
2. Use the DGH Utility Software or a Modbus Master program to perform steps #3 & #5.
3. Set all channels to the same range. Start with +/-10Vdc range, work downward as per values in Table 1.0.
4. Trim Zero on all channels.
  - a. Write a value of 0x0002h to Control Register 40241 to Write-Enable the module.
  - b. Retrieve Trim Zero register value for specific range from Table 2.0 below.
  - c. Write value of 0x00h to Range Trim Zero register, (ie. 40114 for +/-10V).
  - d. Perform steps #4a through #4c to trim zero on each range.

##### Trim Span:

1. Set the DC calibrator voltage output to +10.000Vdc.
2. Use the DGH Utility Software or a Modbus Master program to perform steps #3 & #5.
3. Set all channels to the same range. Start with +/-0.025Vdc range, work upward as per values in Table 3.0.
4. Trim Span on each channel.
  - a. Write a value of 0x0002h to Control Register 40241 to Write-Enable the module.
  - b. Retrieve Trim Span register value for specific range from Table 2.0 below.
  - c. Write value of 0xfffe to Trim Span register, (ie. 40146 for +/-10V).
  - d. Perform steps #4a through #4c to trim span on each range.



#### 4.1.6 Seven Channel Voltage Input Calibration Tables:

<b>Seven Channel Range Register Values</b>			
<b>Channel</b>	<b>Range Control</b>	<b>Range Values</b>	
Channel 0	40097	00	Disabled
Channel 1	40098	01	+/-10V
Channel 2	40099	02	+/-5V
Channel 3	40100	03	+/-1V
Channel 4	40101	04	+/-0.1V
Channel 5	40102	05	+/-0.05V
Channel 6	40103	06	+/-0.025V

**Table 1.0** Register Setup Values.

<b>Trim Zero Registers and Calibration Values</b>		
<b>Range</b>	<b>Register</b>	<b>Value</b>
+/-10Vdc	40114	0000
+/-5Vdc	40115	0000
+/-1Vdc	40116	0000
+/-0.1Vdc	40117	0000
+/-0.05Vdc	40118	0000
+/-0.025Vdc	40119	0000

**Table 2.0** Trim Zero Registers and Values.

<b>Trim Span Registers and Calibration Values</b>		
<b>Range</b>	<b>Register</b>	<b>Value</b>
+/-0.025Vdc	40151	FFFE
+/-0.05Vdc	40150	FFFE
+/-0.1Vdc	40149	FFFE
+/-1Vdc	40148	FFFE
+/-5Vdc	40147	FFFE
+/-10Vdc	40146	FFFE

**Table 3.0** Trim Span Registers and Values.

## 4.2 D8200 - Seven Channel Current Input Module

### Overview

The D8200 series analog input module contains seven differential analog inputs for measuring current signals such as 4-20mA loops. Each analog input channel can measure current signals up to +/-20mA. Any unused channels can be disabled.

### Analog to Digital Converter

The D8200 series analog input modules contain a 16-bit analog to digital converter to perform the signal conversion to digital information. The analog to digital converter performs a total of 25 conversions per second. Meaning, if all 7 channels were enabled the each channel would be measured 3+ times per second. The conversion rate per channel can be improved by disabling any unused channels.

### Features and Register Assignments

The D8200 series analog input modules contain many user-selectable features. The user can select all features such as baud rate, parity type, analog range selection and digital filtering. The complete list of features is illustrated in the [“Seven Channel Analog Current Input Register Assignments”](#) register map below. The register map format is used for consistency with the Modbus RTU protocol. The register map contains the register numbers in decimal format, register description, acceptable data values, and list of what each value means. These registers can be written to using most any Modbus master program or using the DGH D6000 series utility software.

**Note:** All Modbus Register values in the tables below are represented as “decimal” numbers.

### Analog Data Values

The D8200 series analog input modules contain seven analog channels and the data values are each stored in registers to be read by the Modbus RTU protocol. The analog data values can be read using either Function 03 or Function 04. For discussion purposes - we will use the Function 03 register values when referring to the location of the analog data values. The first analog input data register is located at register 40049 and there are seven consecutive registers (40049..40055) that contain data values. See Chapter #6 for analog data scaling examples.

### Factory Initial Values

The D8200 series analog module features are initialized at the factory with a set of “Initial Values”. A complete list of factory [“Initial Values”](#) can be found in the table below. For reference purposes, the Modbus Slave address is preset to hex 0x01, the baud rate is 9600, Parity type is None and the Stop Bits is “1”.

### Calibration

The D8200 series analog input modules are shipped from the factory as fully calibrated devices. Throughout the lifetime of the module there may be need to verify or adjust the calibration of the device. The verification and adjustment process should only be completed using NIST traceable calibration equipment. A D8200 series [Calibration procedure](#) is included below.

### Connector Pin Designations

The D8200 series module uses two 3.81mm removable plugs for connecting signals to the module. One six-pin connector is for the power supply and second sixteen-pin connector is used to connect analog input signals to the module. The [pin designations](#) for each connector are printed on the module label and are listed in a table below.

## 4.2.2 Seven Channel Current Input Specifications

### Connections

#### Power & Serial Communications

<u>Pin Number</u>	<u>Pin</u>	<u>Designator</u>
1	GND	- Power Supply
2	+VS	+ Power Supply

#### Analog Input Pin Assignments

<u>Pin Number</u>	<u>Pin</u>	<u>Designator</u>
1	CH1+	CH1 +Input
2	CH1-	CH1 -Input
3	CH2+	CH2 +Input
4	CH2-	CH2 -Input
5	CH3+	CH3 +Input
6	CH3-	CH3 -Input
7	CH4+	CH4 +Input
8	CH4-	CH4 -Input
9	CH5+	CH5 +Input
10	CH5-	CH5 -Input
11	CH6+	CH6 +Input
12	CH6-	CH6 -Input
13	CH7+	CH7 +Input
14	CH7-	CH7 -Input
15	ISO. GND	Isolated GND
16	ISO. GND	Isolated GND

### Specifications

Analog Inputs	7 Channels
Input Range Current	+/-20mA
Differential Reading CH to CH	+/-10Vdc
Protocol Serial	Modbus RTU
Power Supply Voltage Power	+10-30Vdc 1.4W
Connectors Spacing Max Wire Size Max Current	3.81mm 14-24 AWG 8 Amperes
Serial LED Displays Transmit (Top) Receive (Bottom)	TxData RxData

#### 4.2.3 Seven Channel Current Input Module Initial Values

Module Parameter	Value
Slave Address	1
Modbus Response Delay	3mS
Modbus Query Delay	0mS
Conversion Rate	60Hz
Large Signal Filter	0 Seconds
Small Signal Filter	0 Seconds
Channel 0 Range	+/-20mA
Channel 1 Range	+/-20mA
Channel 2 Range	+/-20mA
Channel 3 Range	+/-20mA
Channel 4 Range	+/-20mA
Channel 5 Range	+/-20mA
Channel 6 Range	+/-20mA

#### 4.2.4 Seven Channel Current Input Register Assignments

Register	Description	Functions	Value	Description
40001	Slave Address	R/W	1-DF	Factory set to 0x0001.
40002	UART Setup	R/W		<b>Factory set to 0x0035.</b>
40003	Modbus Delays	R/W	0-303F	<p><u>Bits 0-7</u> The Response Delay in milliseconds. This is required when the RS-485 adapter cannot tri-state immediately after the last character is transmitted from the host. Maximum value is 63mS. Factory default value is 3.</p> <p><u>Bits 8-15</u> The End of Query Delay in milliseconds (48mS max). This is an additional time that the module will wait prior to marking the end of the message. Slower host computers may not be able transmit a continuous message stream, thereby creating gaps between characters exceeding the normal 3.5 character times limit. Factory default value is 0. <b>Factory set, 0x0003.</b></p>
40033	Software Version	R		Factory set, Code Version.
40048	Last Converted Chan, Conversion Counter	R	0-06FF	<p><u>Bits 0-7</u> The counter increments each conversion and rolled over after FF. The Conversion Counter indicates when the data registers have been updated.</p> <p><u>Bits 8-10</u> Input channel last conversion stored. The information is useful when all channel data is read back with 1 query. The user can identify which channels have been converted since the last query as long as the time between queries is less than 8 conversion times. Initialized to '0x0000' on device reset.</p>
40049	Channel 0 Data	R	0-FFFF	Data - Ch 0, Offset binary, zero=0x8000.
40050	Channel 1 Data	R	0-FFFF	Data - Channel 1
40051	Channel 2 Data	R	0-FFFF	Data - Channel 2
40052	Channel 3 Data	R	0-FFFF	Data - Channel 3
40053	Channel 4 Data	R	0-FFFF	Data - Channel 4
40054	Channel 5 Data	R	0-FFFF	Data - Channel 5
40055	Channel 6 Data	R	0-FFFF	Data - Channel 6

40095	Misc. Setup	R/W	0-1	<u>Bit 0</u> – Normal Mode Rejection Setting 0 – 60Hz, 25 Hz Conversion Speed. 1 – 50Hz, 20 Hz Conversion Speed. <b>Factory set to 0x0000.</b>																														
40096	Signal Filtering	R/W	0-3F	This register controls all channels. Time constants are only approximate values. <table><tr><td><u>Bits 0-3</u></td><td><u>Small Filter Time Constant(Secs)</u></td></tr><tr><td>1</td><td>0</td></tr><tr><td>1</td><td>0.5</td></tr><tr><td>2</td><td>1</td></tr><tr><td>3</td><td>2</td></tr><tr><td>4</td><td>4</td></tr><tr><td>5</td><td>8</td></tr><tr><td>6</td><td>16</td></tr><tr><td>7</td><td>32</td></tr></table> <table><tr><td><u>Bits 4-7</u></td><td><u>Large Filter Time Constant(Secs)</u></td></tr><tr><td>0</td><td>0</td></tr><tr><td>1</td><td>0.5</td></tr><tr><td>2</td><td>1</td></tr><tr><td>3</td><td>2</td></tr><tr><td>4-7</td><td>Reserved</td></tr></table> <b>Factory set to 0x0000.</b>	<u>Bits 0-3</u>	<u>Small Filter Time Constant(Secs)</u>	1	0	1	0.5	2	1	3	2	4	4	5	8	6	16	7	32	<u>Bits 4-7</u>	<u>Large Filter Time Constant(Secs)</u>	0	0	1	0.5	2	1	3	2	4-7	Reserved
<u>Bits 0-3</u>	<u>Small Filter Time Constant(Secs)</u>																																	
1	0																																	
1	0.5																																	
2	1																																	
3	2																																	
4	4																																	
5	8																																	
6	16																																	
7	32																																	
<u>Bits 4-7</u>	<u>Large Filter Time Constant(Secs)</u>																																	
0	0																																	
1	0.5																																	
2	1																																	
3	2																																	
4-7	Reserved																																	
40097	Setup Channel 0	R/W	0-F	Channel 0 range. Non-volatile write protected register. If the EEPROM cannot be written because of not being enabled, it replies with a Negative Acknowledge Exception response 07h. Modbus function code 10h is limited to 4 data values. <table><tr><td><u>Range:</u></td><td><u>Bits 0-7 Hex</u></td></tr><tr><td>Disable Channel</td><td>00</td></tr><tr><td>+/-20mA</td><td>03</td></tr></table> <b>Factory set to 0x0003.</b>	<u>Range:</u>	<u>Bits 0-7 Hex</u>	Disable Channel	00	+/-20mA	03																								
<u>Range:</u>	<u>Bits 0-7 Hex</u>																																	
Disable Channel	00																																	
+/-20mA	03																																	
40098	Setup Channel 1	R/W	0-F	Holds Channel 1 range. <b>Factory set to 0x0003.</b>																														
40099	Setup Channel 2	R/W	0-F	Holds Channel 2 range. <b>Factory set to 0x0003.</b>																														
40100	Setup Channel 3	R/W	0-F	Holds Channel 3 range. <b>Factory set to 0x0003.</b>																														
40101	Setup Channel 4	R/W	0-F	Holds Channel 4 range. <b>Factory set to 0x0003.</b>																														
40102	Setup Channel 5	R/W	0-F	Holds Channel 5 range. <b>Factory set to 0x0003.</b>																														
40103	Setup Channel 6	R/W	0-F	Holds Channel 6 range. <b>Factory set to 0x0003.</b>																														
40116	Trim Zero, +/-20mA Range	WP	0	Force all channel data to 0x8000, input signal = 0. Wait 15 Secs, Write 0x0000.																														
40148	Trim FS, +/-20mA Range	WP	D000-FFFE	Force all channel data to top of range, Wait 15 Sec, Write value (0xfffe if +F.S.).																														
40241	Control Register	W		0 – Normal operation (NOP) 1 – Remote Reset (write protected) 2 – Write Enable 5 – Initialize Host Communication setup																														

**Functions:**

R      Read Only  
R/W    Read/Write  
WP     Write-Protected

## 4.2.5 Seven Channel Current Input Calibration Procedure

### Required Equipment:

1. Computer running the DGH Utility Software or another Modbus Master program.
2. A NIST traceable DC Current Standard with +/-20mA range.

### Setup Steps – Perform Calibration Steps in Order Listed:

1. Allow unit to warm up for 15 minutes.
2. Connect the positive lead of DC current calibrator to Ch1 +Input terminal.
3. Connect the Ch1 –Input terminal the Ch2 +Input terminal.
4. Connect the Ch2 –Input terminal the Ch3 +Input terminal.
5. Connect the Ch3 –Input terminal the Ch4 +Input terminal.
6. Connect the Ch4 –Input terminal the Ch5 +Input terminal.
7. Connect the Ch5 –Input terminal the Ch6 +Input terminal.
8. Connect the Ch6 –Input terminal the Ch7 +Input terminal.
9. Connect the negative lead of the DC current calibrator to Ch7 –Input terminal.
10. Install the DGH Utility Software or another Modbus Master Program to communicate with, and calibrate with the module via serial port or a TCP/IP connection.
11. Using the DGH Utility Software configure all channels for the +/-20mA range using the data values in Table 1.0 below.

### Trim Zero:

1. Set the DC calibrator current output to +0.00mA. Wait 30 seconds.
2. Trim Zero on all channels.
  - a. Write a value of 0x0002h to Control Register 40241 to Write-Enable the module.
  - b. Trim Zero on all seven channels by writing a value of 0x0000h to Trim Zero register 40116. See Table 2.0 below.

### Trim Span:

1. Set the DC calibrator current output to +20.000mA. Wait 30 seconds.
2. Trim Span on all channels.
  - a. Write a value of 0x0002h to Control Register 40241 to Write-Enable the module.
  - b. Trim Span on all seven channels by writing a value of 0xfffe to Trim Span register 40148. See Table 3.0 below.

#### 4.2.6 Seven Channel Current Input Calibration Tables:

<b><u>Seven Channel Current Register Values</u></b>		
<b><u>Channel</u></b>	<b><u>Range Control</u></b>	<b><u>Range Values</u></b>
Channel 0	40097	0 = Disabled 3 = +/-20mA
Channel 1	40098	
Channel 2	40099	
Channel 3	40100	
Channel 4	40101	
Channel 5	40102	
Channel 6	40103	

**Table 1.0** Register Setup Values.

<b><u>Trim Zero Register and Calibration Value</u></b>		
<b><u>Range</u></b>	<b><u>Register</u></b>	<b><u>Value</u></b>
+/-20mA	40116	0000

**Table 2.0** Trim Zero Register and Value.

<b><u>Trim Span Register and Calibration Value</u></b>		
<b><u>Range</u></b>	<b><u>Register</u></b>	<b><u>Value</u></b>
+/-20mA	40148	FFFE

**Table 3.0** Trim Span Register and Value.



## 4.3 D8300 - Seven Channel Thermocouple Input Module

### Overview

The D8300 series analog input module contains seven differential inputs for measuring thermocouple signals. Each analog input channel is user programmable and may be assigned to measure one of 8 different thermocouple types. The D8300 can measure thermocouple types J, K, T, E, R, S, B and C. Any unused channels can be disabled.

### Analog to Digital Converter

The D8300 series analog input modules contain a 16-bit analog to digital converter to perform the signal conversion to digital information. The analog to digital converter performs a total of 25 conversions per second. Meaning, if all 7 channels were enabled the each channel would be measured 3+ times per second. The conversion rate per channel can be improved by disabling any unused channels.

### Features and Register Assignments

The D8300 series analog input modules contain many user-selectable features. The user can select all features such as baud rate, parity type, analog range selection and digital filtering. The complete list of features is illustrated in the [“Seven Channel Analog Thermocouple Input Register Assignments”](#) register map below. The register map format is used for consistency with the Modbus RTU protocol. The register map contains the register numbers in decimal format, register description, acceptable data values, and list of what each value means. These registers can be written to using most any Modbus master program or using the DGH D6000 series utility software.

**Note:** All Modbus Register values in the tables below are represented as “decimal” numbers.

### Analog Data Values

The D8300 series analog input modules contain seven analog channels and the data values are each stored in registers to be read by the Modbus RTU protocol. The analog data values can be read using either Function 03 or Function 04. For discussion purposes - we will use the Function 03 register values when referring to the location of the analog data values. The first analog input data register is located at register 40049 and there are seven consecutive registers (40049..40055) that contain data values. See Chapter #6 for analog data scaling examples.

### Factory Initial Values

The D8300 series analog module features are initialized at the factory with a set of “Initial Values”. A complete list of factory [“Initial Values”](#) can be found in the table below. For reference purposes, the Modbus Slave address is preset to hex 0x01, the baud rate is 9600, Parity type is None and the Stop Bits is “1”.

### Calibration

The D8300 series analog input modules are shipped from the factory as fully calibrated devices. Throughout the lifetime of the module there may be need to verify or adjust the calibration of the device. The verification and adjustment process should only be completed using NIST traceable calibration equipment. A D8300 series [Calibration procedure](#) is included below.

### Connector Pin Designations

The D8300 series module uses two 3.81mm removable plugs for connecting signals to the module. One two-pin connector is for the power supply and the other sixteen-pin connector is used to connect analog input signals to the module. The [pin designations](#) for each connector are printed on the module label and are listed in a table below.

#### 4.3.2 Seven Channel Thermocouple Input Specifications

##### Connections

##### Specifications

##### Power & Serial Communications

Analog Inputs

7 Channels

<u>Pin Number</u>	<u>Pin</u>	<u>Designator</u>
1	GND	- Power Supply
2	+VS	+ Power Supply

Input Type  
Thermocouple

J = -200-760C  
K = -150-1250C  
T = -200-400C  
E = -100-1000C  
R = 0-1750C  
S = 0-1750C  
B = 0-1820C  
C = 0-2315C

##### Analog Input Pin Assignments

<u>Pin Number</u>	<u>Pin</u>	<u>Designator</u>
1	CH1+	CH1 +Input
2	CH1-	CH1 -Input
3	CH2+	CH2 +Input
4	CH2-	CH2 -Input
5	CH3+	CH3 +Input
6	CH3-	CH3 -Input
7	CH4+	CH4 +Input
8	CH4-	CH4 -Input
9	CH5+	CH5 +Input
10	CH5-	CH5 -Input
11	CH6+	CH6 +Input
12	CH6-	CH6 -Input
13	CH7+	CH7 +Input
14	CH7-	CH7 -Input
15	ISO. GND	Isolated GND
16	ISO. GND	Isolated GND

Differential Reading  
CH to CH

+/-10Vdc

Protocol  
Serial

Modbus RTU

Power Supply  
Voltage  
Power

+10-30Vdc  
1.4W

Connectors

Spacing  
Max Wire Size  
Max Current

3.81mm  
14-24 AWG  
8 Amperes

Serial LED Displays  
Transmit (Top)  
Receive (Bottom)

TxData  
RxData

#### 4.3.3 Seven Channel Thermocouple Input Module Initial Values

Module Parameter	Value
Slave Address	1
Baud Rate	9600
Parity Type	None
Modbus Response Delay	3mS
Modbus Query Delay	0mS
Conversion Rate	60Hz
Large Signal Filter	0 Seconds
Small Signal Filter	0 Seconds
Channel 0 Range	J-Tc Type
Channel 1 Range	J-Tc Type
Channel 2 Range	J-Tc Type
Channel 3 Range	J-Tc Type
Channel 4 Range	J-Tc Type
Channel 5 Range	J-Tc Type
Channel 6 Range	J-Tc Type

#### 4.3.4 Seven Channel Thermocouple Input Register Assignments

Register	Description	Functions	Value	Description
40001	Slave Address	R/W	1-DF	Factory set to 0x0001.
40002	UART Setup	R/W		<b>Factory set to 0x0035.</b>
40003	Modbus Delays	R/W	0-303F	<p><u>Bits 0-7</u> The Response Delay in milliseconds. This is required when the RS-485 adapter cannot tri-state immediately after the last character is transmitted from the host. Maximum value is 63mS. Factory default value is 3.</p> <p><u>Bits 8-15</u> The End of Query Delay in milliseconds (48mS max). This is an additional time that the module will wait prior to marking the end of the message. Slower host computers may not be able transmit a continuous message stream, thereby creating gaps between characters exceeding the normal 3.5 character times limit. Factory default value is 0. <b>Factory set, 0x0003.</b></p>
40033	Software Version	R		Factory set, Code Version.
40048	Last Converted Chan, Conversion Counter	R	0-06FF	<p><u>Bits 0-7</u> The counter increments each conversion and rolled over after FF. The Conversion Counter indicates when the data registers have been updated.</p> <p><u>Bits 8-10</u> Input channel last conversion stored. The information is useful when all channel data is read back with 1 query. The user can identify which channels have been converted since the last query as long as the time between queries is less than 8 conversion times. Initialized to '0x0000' on device reset.</p>
40049	Channel 0 Data	R	0-FFFF	Data - Ch 0, Offset binary, zero=0x8000.
40050	Channel 1 Data	R	0-FFFF	Data - Channel 1
40051	Channel 2 Data	R	0-FFFF	Data - Channel 2
40052	Channel 3 Data	R	0-FFFF	Data - Channel 3
40053	Channel 4 Data	R	0-FFFF	Data - Channel 4
40054	Channel 5 Data	R	0-FFFF	Data - Channel 5
40055	Channel 6 Data	R	0-FFFF	Data - Channel 6

40095	Misc. Setup	R/W	0-1	<u>Bit 0</u> – Normal Mode Rejection Setting 0 – 60Hz, 25 Hz Conversion Speed. 1 – 50Hz, 20 Hz Conversion Speed. <b>Factory set to 0x0000.</b>																														
40096	Signal Filtering	R/W	0-3F	This register controls all channels. Time constants are only approximate values. <table><tr><td><u>Bits 0-3</u></td><td><u>Small Filter Time Constant(Secs)</u></td></tr><tr><td>2</td><td>0</td></tr><tr><td>1</td><td>0.5</td></tr><tr><td>2</td><td>1</td></tr><tr><td>3</td><td>2</td></tr><tr><td>4</td><td>4</td></tr><tr><td>5</td><td>8</td></tr><tr><td>6</td><td>16</td></tr><tr><td>7</td><td>32</td></tr></table> <table><tr><td><u>Bits 4-7</u></td><td><u>Large Filter Time Constant(Secs)</u></td></tr><tr><td>0</td><td>0</td></tr><tr><td>1</td><td>0.5</td></tr><tr><td>2</td><td>1</td></tr><tr><td>3</td><td>2</td></tr><tr><td>4-7</td><td>Reserved</td></tr></table> <b>Factory set to 0x0000.</b>	<u>Bits 0-3</u>	<u>Small Filter Time Constant(Secs)</u>	2	0	1	0.5	2	1	3	2	4	4	5	8	6	16	7	32	<u>Bits 4-7</u>	<u>Large Filter Time Constant(Secs)</u>	0	0	1	0.5	2	1	3	2	4-7	Reserved
<u>Bits 0-3</u>	<u>Small Filter Time Constant(Secs)</u>																																	
2	0																																	
1	0.5																																	
2	1																																	
3	2																																	
4	4																																	
5	8																																	
6	16																																	
7	32																																	
<u>Bits 4-7</u>	<u>Large Filter Time Constant(Secs)</u>																																	
0	0																																	
1	0.5																																	
2	1																																	
3	2																																	
4-7	Reserved																																	
40097	Setup Channel 0	R/W	0-F	Channel 0 range. Non-volatile write protected register. If the EEPROM cannot be written because of not being enabled, it replies with a Negative Acknowledge Exception response 07h. Modbus function code 10h is limited to 4 data values.  <table><tr><td><u>Range:</u></td><td><u>Bits 0-7 Hex</u></td></tr><tr><td>Disable Channel</td><td>00</td></tr><tr><td>J-Tc (-200-760C)</td><td>21</td></tr><tr><td>K-Tc (-150-1250C)</td><td>22</td></tr><tr><td>T-Tc (-200-400C)</td><td>23</td></tr><tr><td>E-Tc (-100-1000C)</td><td>24</td></tr><tr><td>R-Tc (+0-1750C)</td><td>25</td></tr><tr><td>S-Tc (+0-1750C)</td><td>26</td></tr><tr><td>B-Tc (+0-1820C)</td><td>27</td></tr><tr><td>C-Tc (+0-2315C)</td><td>28</td></tr></table> <b>Factory set to 0x0003.</b>	<u>Range:</u>	<u>Bits 0-7 Hex</u>	Disable Channel	00	J-Tc (-200-760C)	21	K-Tc (-150-1250C)	22	T-Tc (-200-400C)	23	E-Tc (-100-1000C)	24	R-Tc (+0-1750C)	25	S-Tc (+0-1750C)	26	B-Tc (+0-1820C)	27	C-Tc (+0-2315C)	28										
<u>Range:</u>	<u>Bits 0-7 Hex</u>																																	
Disable Channel	00																																	
J-Tc (-200-760C)	21																																	
K-Tc (-150-1250C)	22																																	
T-Tc (-200-400C)	23																																	
E-Tc (-100-1000C)	24																																	
R-Tc (+0-1750C)	25																																	
S-Tc (+0-1750C)	26																																	
B-Tc (+0-1820C)	27																																	
C-Tc (+0-2315C)	28																																	
40098	Setup Channel 1	R/W	0-F	Holds Channel 1 range. <b>Factory set to 0x0003.</b>																														
40099	Setup Channel 2	R/W	0-F	Holds Channel 2 range. <b>Factory set to 0x0003.</b>																														
40100	Setup Channel 3	R/W	0-F	Holds Channel 3 range. <b>Factory set to 0x0003.</b>																														
40101	Setup Channel 4	R/W	0-F	Holds Channel 4 range. <b>Factory set to 0x0003.</b>																														
40102	Setup Channel 5	R/W	0-F	Holds Channel 5 range. <b>Factory set to 0x0003.</b>																														
40103	Setup Channel 6	R/W	0-F	Holds Channel 6 range. <b>Factory set to 0x0003.</b>																														
40116	Trim Zero, 1V Range	WP	0	Force all channel data to 0x8000, input signal = 0. Wait 15 Secs, Write 0x0000.																														
40117	Trim Zero, 0.1V Range	WP	0	Refer to Modbus register 40116.																														
40118	Trim Zero, 0.05V Range	WP	0	Refer to Modbus register 40116.																														
40119	Trim Zero, 0.025V Range	WP	0	Refer to Modbus register 40116.																														
40129	CJC Trim,	WP	0, 1	Write 0x0000 to decrease value, write																														

	Channels 0-3			0x0001 to increase the value.
40130	CJC Trim, Channels 4-6	WP	0, 1	Write 0x0000 to decrease value, write 0x0001 to increase the value.
40148	Trim FS, 1V Range	WP	D000- FFFE	Force all channel data to top of range, Wait 15 Sec, Write value (0xfffe if +F.S.).
40149	Trim FS, 0.1V Range	WP	D000- FFFE	Refer to Modbus register 40148.
40150	Trim FS, 0.05V Range	WP	D000- FFFE	Refer to Modbus register 40148.
40151	Trim FS, 0.025V Range	WP	D000- FFFE	Refer to Modbus register 40148.
<b>40241</b>	<b>Control Register</b>	W		<b>0</b> – Normal operation (NOP) <b>1</b> – Remote Reset (write protected) <b>2</b> – Write Enable <b>5</b> – Initialize Host Communication setup

### 4.3.5 Seven Channel Thermocouple Input Calibration Procedure

#### Required Equipment:

1. Computer running the DGH Utility Software or another Modbus Master program.
2. A NIST traceable DC Voltage Standard.

#### Setup Steps – Perform Calibration Steps in Order Listed:

1. Allow unit to warm up for 15 minutes.
2. Connect the positive lead of DC voltage calibrator to Ch1 +Input terminal.
3. Connect the negative lead of DC voltage calibrator to Ch1 –Input terminal.
4. Connect the positive lead of DC voltage calibrator to Ch2 +Input terminal.
5. Connect the negative lead of DC voltage calibrator to Ch2 –Input terminal.
6. Connect the positive lead of DC voltage calibrator to Ch3 +Input terminal.
7. Connect the negative lead of DC voltage calibrator to Ch3 –Input terminal.
8. Connect the positive lead of DC voltage calibrator to Ch4 +Input terminal.
9. Connect the negative lead of DC voltage calibrator to Ch4 –Input terminal.
10. Connect the positive lead of DC voltage calibrator to Ch5 +Input terminal.
11. Connect the negative lead of DC voltage calibrator to Ch5 –Input terminal.
12. Connect the positive lead of DC voltage calibrator to Ch6 +Input terminal.
13. Connect the negative lead of DC voltage calibrator to Ch6 –Input terminal.
14. Connect the positive lead of DC voltage calibrator to Ch7 +Input terminal.
15. Connect the negative lead of DC voltage calibrator to Ch7 –Input terminal.
16. Install the DGH Utility Software or another Modbus Master Program to communicate with, and calibrate with the module via serial port or a TCP/IP connection.
17. Using the DGH Utility Software configure all channels for the +/-20mA range using the data values in Table 1.0 below.

#### Trim Zero:

1. Set the DC voltage calibrator output to +0.00mV. Wait 30 seconds.
2. Trim Zero on all channels.
  - a. Write a value of 0x0002h to Control Register 40241 to Write-Enable the module.
  - b. Trim Zero on all seven channels by writing a value of 0x0000h to Trim Zero registers 40116-40119. See Table 2.0 below.

#### Trim Span:

1. Set the DC voltage calibrator output to Full Scale of Range Selected. Wait 30 seconds.
2. Trim Span on all channels.
  - a. Write a value of 0x0002h to Control Register 40241 to Write-Enable the module.
  - b. Trim Span on all seven channels by writing a value of 0xfffe to Trim Span registers 40148-40151. See Table 3.0 below.

#### Trim Cold Junction Compensation (CJC's):

1. Set the input signal to ----.
2. Set all module channels to the J-Thermocouple range.
3. Use the DGH Utility Software or a Modbus Master program to perform steps #4 & #5.
4. Trim CJC on Channels 0-3
  - a. Write a value of 0x0002h to Control Register 40241 to Write-Enable the module.
  - b. Write a value of 0x0001h to register 40129 to Increase the value or write a value of 0x0000 to register 40129 to decrease the value.
5. Trim CJC on Channels 4-6
  - a. Write a value of 0x0002h to Control Register 40241 to Write-Enable the module.
  - b. Write a value of 0x0001h to register 40130 to Increase the value or write a value of 0x0000 to register 40130 to decrease the value..

#### 4.3.5 Seven Channel Thermocouple Input Calibration Tables:

<b>Seven Channel Range Register Values</b>			
<b>Channel</b>	<b>Range Control</b>	<b>Range Values</b>	
Channel 0	40097	00	Disabled
Channel 1	40098	03	+/-1V
Channel 2	40099	04	+/-0.1V
Channel 3	40100	05	+/-0.05V
Channel 4	40101	06	+/-0.025V
Channel 5	40102	21	J-Type TC
Channel 6	40103	22	K-Type TC
		23	T-Type TC
		24	E-Type TC
		25	R-Type TC
		26	S-Type TC
		27	B-Type TC
		28	C-Type TC

**Table 1.0** Register Setup Values.

<b>Trim Zero Registers and Calibration Values</b>		
<b>Range</b>	<b>Register</b>	<b>Value</b>
+/-1Vdc	40116	0000
+/-0.1Vdc	40117	0000
+/-0.05Vdc	40118	0000
+/-0.025Vdc	40119	0000

**Table 2.0** Trim Zero Registers and Values.

<b>Trim Span Registers and Calibration Values</b>		
<b>Range</b>	<b>Register</b>	<b>Value</b>
+/-0.025Vdc	40151	FFFE
+/-0.05Vdc	40150	FFFE
+/-0.1Vdc	40149	FFFE
+/-1Vdc	40148	FFFE

**Table 3.0** Trim Span Registers and Values.

<b>CJC Calibration Registers and Values</b>			
<b>Channels</b>	<b>Register</b>	<b>Increase Value</b>	<b>Decrease Value</b>
0..3	40129	0001	0000
4..6	40130	0001	0000

**Table 4.0** Trim CJC Registers and Values.



## 4.4 D8400 - Seven Channel Voltage, Thermocouple, Current Input Module

### Overview

The D8400 series analog input module contains seven analog inputs for measuring voltages, thermocouples and current. Each analog input channel is user programmable and may be assigned to different input types.

When measuring voltages or thermocouples, simply use the Utility Software to select the type of signal and range. When configuring any channel to measure current loops or 4-20mA signals then the Input range can be set to either the +/-1Vdc or +/-20mA selections. The module uses the +/-1Vdc range to measure current up to 20mA.

When measuring current signals then a measurement sense resistor must be enabled via jumpers inside the module. Each channel has a jumper strip that must be shorted using a provided shorting bar to enable the sense resistor. The sense resistor is internally connected directly across the channel+ and channel- input pins. See the D8400 board layout below for instructions on taking the module and enabling the jumpers.

### Analog to Digital Converter

The D8400 series analog input modules contain a 16-bit analog to digital converter to perform the signal conversion to digital information. The analog to digital converter performs a total of 25 conversions per second. Meaning, if all 7 channels were enabled the each channel would be measured 3+ times per second. The conversion rate per channel can be improved by disabling any unused channels.

### Features and Register Assignments

The D8400 series analog input modules contain many user-selectable features. The user can select all features such as baud rate, parity type, analog range selection and digital filtering. The complete list of features is illustrated in the "[Seven Channel Voltage, Thermocouple and Current Input Register Assignments](#)" register map below. The register map format is used for consistency with the Modbus RTU protocol. The register map contains the register numbers in decimal format, register description, acceptable data values, and list of what each value means. These registers can be written to using most any Modbus master program or using the DGH D6000 series utility software.

**Note:** All Modbus Register values in the tables below are represented as "decimal" numbers.

### Analog Data Values

The D8400 series analog input modules contain seven analog channels and the data values are each stored in registers to be read by the Modbus RTU protocol. The analog data values can be read using either Function 03 or Function 04. For discussion purposes - we will use the Function 03 register values when referring to the location of the analog data values. The first analog input data register is located at register 40049 and there are seven consecutive registers (40049..40055) that contain data values. See Chapter #6 for analog data scaling examples.

### Factory Initial Values

The D8400 series analog module features are initialized at the factory with a set of "Initial Values". A complete list of factory "[Initial Values](#)" can be found in the table below. For reference purposes, the Modbus Slave address is preset to hex 0x01, the baud rate is 9600, Parity type is None and the Stop Bits is "1".

### Calibration

The D8400 series analog input modules are shipped from the factory as fully calibrated devices. Throughout the lifetime of the module there may be need to verify or adjust the calibration of the device. The verification and adjustment process should only be completed using NIST traceable calibration equipment. A D8400 series [Calibration procedure](#) is included below.

## Connector Pin Designations

The D8400 series module uses two 3.81mm removable plugs for connecting signals to the module. One six-pin connector is for the power supply and the second sixteen-pin connector is used to connect analog input signals to the module. The [pin designations](#) for each connector are printed on the module label and are listed in a table below.

#### 4.4.1 Seven Channel Voltage, Thermocouple, Current Input Pin Assignments and Specifications

##### Connections

##### Power & Serial Communications

<u>Pin Number</u>	<u>Pin</u>	<u>Designator</u>
1	GND	- Power Supply
2	+VS	+ Power Supply

##### Analog Input Pin Assignments

<u>Pin Number</u>	<u>Pin</u>	<u>Designator</u>
1	CH1+	CH1 +Input
2	CH1-	CH1 -Input
3	CH2+	CH2 +Input
4	CH2-	CH2 -Input
5	CH3+	CH3 +Input
6	CH3-	CH3 -Input
7	CH4+	CH4 +Input
8	CH4-	CH4 -Input
9	CH5+	CH5 +Input
10	CH5-	CH5 -Input
11	CH6+	CH6 +Input
12	CH6-	CH6 -Input
13	CH7+	CH7 +Input
14	CH7-	CH7 -Input
15	ISO. GND	Isolated GND
16	ISO. GND	Isolated GND

##### Specifications

Analog Inputs	7 Channels
User Selectable Input Ranges	
Bipolar Voltage	10V, 5V, 1V, 0.1V, 0.05V, 0.025V
Thermocouple	J = -200-760C K = -150-1250C T = -200-400C E = -100-1000C R = 0-1750C S = 0-1750C B = 0-1820C C = 0-2315C
Current	+/-20mA
Differential Reading CH to CH	
Protocol Serial	Modbus RTU
Power Supply Voltage Power	+10-30Vdc 1.4W
Connectors Spacing Max Wire Size Max Current	3.81mm 14-24 AWG 8 Amperes
Serial LED Displays Transmit (Top) Receive (Bottom)	Serial TxData Serial RxData

#### 4.4.2 Seven Channel Voltage, Thermocouple and Current Input Initial Values

Module Parameter	Value
Slave Address	1
Baud Rate	9600
Parity Type	None
Modbus Response Delay	3mS
Modbus Query Delay	0mS
Conversion Rate	60Hz
Large Signal Filter	0 Seconds
Small Signal Filter	0 Seconds
Channel 1 Range	+/-10Vdc
Channel 2 Range	+/-10Vdc
Channel 3 Range	+/-10Vdc
Channel 4 Range	+/-10Vdc
Channel 5 Range	+/-10Vdc
Channel 6 Range	+/-10Vdc
Channel 7 Range	+/-10Vdc

#### 4.4.3 Seven Channel Voltage, Thermocouple and Current Input Register Assignments

Register	Description	Functions	Value	Description
40001	Slave Address	R/W	1-DF	Factory set to 0x0001.
40002	UART Setup	R/W		<b>Factory set to 0x0035.</b>
40003	Modbus Delays	R/W	0-303F	<p><u>Bits 0-7</u> The Response Delay in milliseconds. This is required when the RS-485 adapter cannot tri-state immediately after the last character is transmitted from the host. Maximum value is 63mS. Factory default value is 3.</p> <p><u>Bits 8-15</u> The End of Query Delay in milliseconds (48mS max). This is an additional time that the module will wait prior to marking the end of the message. Slower host computers may not be able transmit a continuous message stream, thereby creating gaps between characters exceeding the normal 3.5 character times limit. Factory default value is 0. <b>Factory set, 0x0003.</b></p>
40033	Software Version	R		Factory set, Code Version.
40048	Last Converted Chan, Conversion Counter	R	0-06FF	<p><u>Bits 0-7</u> The counter increments each conversion and rolled over after FF. The Conversion Counter indicates when the data registers have been updated.</p> <p><u>Bits 8-10</u> Input channel last conversion stored. The information is useful when all channel data is read back with 1 query. The user can identify which channels have been converted since the last query as long as the time between queries is less than 8 conversion times. Initialized to '0x0000' on device reset.</p>
40049	Channel 1 Data	R	0-FFFF	Data - Ch 1, Offset binary, zero=0x8000.
40050	Channel 2 Data	R	0-FFFF	Data - Channel 2
40051	Channel 3 Data	R	0-FFFF	Data - Channel 3
40052	Channel 4 Data	R	0-FFFF	Data - Channel 4
40053	Channel 5 Data	R	0-FFFF	Data - Channel 5
40054	Channel 6 Data	R	0-FFFF	Data - Channel 6
40055	Channel 7 Data	R	0-FFFF	Data - Channel 7

40095	Misc. Setup	R/W	0-1	<u>Bit 0</u> – Normal Mode Rejection Setting 0 – 60Hz, 25 Hz Conversion Speed. 1 – 50Hz, 20 Hz Conversion Speed. <b>Factory set to 0x0000.</b>																																		
40096	Signal Filtering	R/W	0-3F	This register controls all channels. Time constants are only approximate values. <table><tr><th><u>Bits 0-3</u></th><th><u>Small Filter Time Constant(Secs)</u></th></tr><tr><td>3</td><td>0</td></tr><tr><td>1</td><td>0.5</td></tr><tr><td>2</td><td>1</td></tr><tr><td>3</td><td>2</td></tr><tr><td>4</td><td>4</td></tr><tr><td>5</td><td>8</td></tr><tr><td>6</td><td>16</td></tr><tr><td>7</td><td>32</td></tr></table> <table><tr><th><u>Bits 4-7</u></th><th><u>Large Filter Time Constant(Secs)</u></th></tr><tr><td>0</td><td>0</td></tr><tr><td>1</td><td>0.5</td></tr><tr><td>2</td><td>1</td></tr><tr><td>3</td><td>2</td></tr><tr><td>4-7</td><td>Reserved</td></tr></table> <b>Factory set to 0x0000.</b>	<u>Bits 0-3</u>	<u>Small Filter Time Constant(Secs)</u>	3	0	1	0.5	2	1	3	2	4	4	5	8	6	16	7	32	<u>Bits 4-7</u>	<u>Large Filter Time Constant(Secs)</u>	0	0	1	0.5	2	1	3	2	4-7	Reserved				
<u>Bits 0-3</u>	<u>Small Filter Time Constant(Secs)</u>																																					
3	0																																					
1	0.5																																					
2	1																																					
3	2																																					
4	4																																					
5	8																																					
6	16																																					
7	32																																					
<u>Bits 4-7</u>	<u>Large Filter Time Constant(Secs)</u>																																					
0	0																																					
1	0.5																																					
2	1																																					
3	2																																					
4-7	Reserved																																					
40097	Setup Channel 1	R/W	0-F	Channel 1 range. Non-volatile write protected register. If the EEPROM cannot be written because of not being enabled, it replies with a Negative Acknowledge Exception response 07h. Modbus function code 10h is limited to 4 data values. <table><tr><th><u>Range:</u></th><th><u>Bits 0-7 Hex</u></th></tr><tr><td>Disable Channel</td><td>00</td></tr><tr><td>+/-10V</td><td>01</td></tr><tr><td>+/-5V</td><td>02</td></tr><tr><td>+/-1V</td><td>03</td></tr><tr><td>+/-0.100V</td><td>04</td></tr><tr><td>+/-0.050V</td><td>05</td></tr><tr><td>+/-0.025V</td><td>06</td></tr><tr><td>J-Tc (-200-760C)</td><td>21</td></tr><tr><td>K-Tc (-150-1250C)</td><td>22</td></tr><tr><td>T-Tc (-200-400C)</td><td>23</td></tr><tr><td>E-Tc (-100-1000C)</td><td>24</td></tr><tr><td>R-Tc (+0-1750C)</td><td>25</td></tr><tr><td>S-Tc (+0-1750C)</td><td>26</td></tr><tr><td>B-Tc (+0-1820C)</td><td>27</td></tr><tr><td>C-Tc (+0-2315C)</td><td>28</td></tr><tr><td>+/-20mA Current</td><td>03 (Special)</td></tr></table> <b>Factory set to 0x0001.</b>	<u>Range:</u>	<u>Bits 0-7 Hex</u>	Disable Channel	00	+/-10V	01	+/-5V	02	+/-1V	03	+/-0.100V	04	+/-0.050V	05	+/-0.025V	06	J-Tc (-200-760C)	21	K-Tc (-150-1250C)	22	T-Tc (-200-400C)	23	E-Tc (-100-1000C)	24	R-Tc (+0-1750C)	25	S-Tc (+0-1750C)	26	B-Tc (+0-1820C)	27	C-Tc (+0-2315C)	28	+/-20mA Current	03 (Special)
<u>Range:</u>	<u>Bits 0-7 Hex</u>																																					
Disable Channel	00																																					
+/-10V	01																																					
+/-5V	02																																					
+/-1V	03																																					
+/-0.100V	04																																					
+/-0.050V	05																																					
+/-0.025V	06																																					
J-Tc (-200-760C)	21																																					
K-Tc (-150-1250C)	22																																					
T-Tc (-200-400C)	23																																					
E-Tc (-100-1000C)	24																																					
R-Tc (+0-1750C)	25																																					
S-Tc (+0-1750C)	26																																					
B-Tc (+0-1820C)	27																																					
C-Tc (+0-2315C)	28																																					
+/-20mA Current	03 (Special)																																					
40098	Setup Channel 2	R/W	0-F	Holds Channel 2 range. <b>Factory set to 0x0001.</b>																																		
40099	Setup Channel 3	R/W	0-F	Holds Channel 3 range. <b>Factory set to 0x0001.</b>																																		
40100	Setup Channel 4	R/W	0-F	Holds Channel 4 range. <b>Factory set to 0x0001.</b>																																		
40101	Setup Channel 5	R/W	0-F	Holds Channel 5 range. <b>Factory set to 0x0001.</b>																																		
40102	Setup Channel 6	R/W	0-F	Holds Channel 6 range. <b>Factory set to 0x0001.</b>																																		
40103	Setup Channel 7	R/W	0-F	Holds Channel 7 range. <b>Factory set to 0x0001.</b>																																		
40114	Trim Zero, 10V Range	WP	0	Forces all Channel Data Registers to 8000h, with input signal equal to zero. Apply																																		

				calibration signal at least 15 seconds prior to calibrating to all channels. Calibration Acknowledge Exception Response. Calibration takes 20 seconds.
40115	Trim Zero, 5V Range	WP	0	Refer to Modbus register 40072.
40116	Trim Zero, 1V Range	WP	0	Refer to Modbus register 40072.
40117	Trim Zero, 0.1V Range	WP	0	Refer to Modbus register 40072. Apply calibration signal at least 1 minute prior to calibrating to all channels.
40118	Trim Zero, 0.05V Range	WP	0	Refer to Modbus register 40072. Apply calibration signal at least 1 minute prior to calibrating to all channels.
40119	Trim Zero, 0.025V Range	WP	0	Refer to Modbus register 40072. Apply calibration signal at least 1 minute prior to calibrating to all channels.
40129	Trim CJC 0	WP	0-1	Pre-calibrate appropriate mV range. Attach thermocouple to channel 1, with measurement end in ice bath. Writing a 1 will increase Modbus TC output. Writing a 0 will decrease Modbus TC output. No Trim for R, S, B, C Types.
40130	Trim CJC 1	WP	0-1	Pre-calibrate appropriate mV range. Attach thermocouple to channel 5, with measurement end in ice bath. Writing a 1 will increase Modbus TC output. Writing a 0 will decrease Modbus TC output. No Trim for R, S, B, C Types.
40146	Trim FS, 10V Range	WP	D000-FFFE	Forces all Channel Data Registers to written value, with appropriate input signal. Apply calibration signal at least 15 seconds prior to calibrating to all channels. Acknowledge Exception Response. Calibration takes 20 seconds. See note 1.
40147	Trim FS, 5V Range	WP	D000-FFFE	See Modbus Register 40146.
40148	Trim FS, 1V Range	WP	D000-FFFE	See Modbus Register 40146.
40149	Trim FS, 0.1V Range	WP	D000-FFFE	See Modbus Register 40146. Apply calibration signal at least 1 minute prior to calibrating to all channels.
40150	Trim FS, 0.05V Range	WP	D000-FFFE	See Modbus Register 40146. Apply calibration signal at least 1 minute prior to calibrating to all channels.
40151	Trim FS, 0.025V Range	WP	D000-FFFE	See Modbus Register 40146. Apply calibration signal at least 1 minute prior to calibrating to all channels.
<b>40241</b>	<b>Control Register</b>	<b>W</b>		<b>0</b> – Normal operation (NOP) <b>1</b> – Remote Reset (write protected) <b>2</b> – Write Enable <b>5</b> – Initialize Host Communication setup

#### **Functions:**

R      Read Only  
R/W    Read/Write  
WP     Write-Protected

#### 4.4.4 Seven Channel Voltage, Thermocouple and Current Input Calibration Procedure

##### Required Equipment:

1. Computer running the DGH Utility Software or another Modbus Master program.
2. A NIST traceable DC Voltage Standard with +/-10Vdc range.

##### Setup Steps – Perform Calibration Steps in Order Listed:

1. Allow unit to warm up for 15 minutes.
2. Short all the +Input pins together using short jumper wires.
3. Short all the -Input pins together using short jumper wires.
4. Connect the +Input wires to the Positive terminal on the DC voltage calibrator.
5. Connect the -Input wires to the Negative terminal on the DC voltage calibrator.
6. Install the DGH Utility Software or another Modbus Master Program to communicate with, and calibrate with the module via serial port or a TCP/IP connection.

##### Trim Zero:

1. Set the DC calibrator voltage output to +0.0000Vdc.
2. Use the DGH Utility Software or a Modbus Master program to perform steps #3 & #5.
3. Set all channels to the same range. Start with +/-10Vdc range, work downward as per values in Table 1.0.
4. Trim Zero on all channels.
  - a. Write a value of 0x0002h to Control Register 40241 to Write-Enable the module.
  - b. Retrieve Trim Zero register value for specific range from Table 2.0 below.
  - c. Write value of 0x00h to Range Trim Zero register, (ie. 40114 for +/-10V).
  - d. Perform steps #4a through #4c to trim zero on each range.

##### Trim Span:

1. Set the DC calibrator voltage output to +10.000Vdc.
2. Use the DGH Utility Software or a Modbus Master program to perform steps #3 & #5.
3. Set all channels to the same range. Start with +/-0.025Vdc range, work upward as per values in Table 3.0.
4. Trim Span on each channel.
  - a. Write a value of 0x0002h to Control Register 40241 to Write-Enable the module.
  - b. Retrieve Trim Span register value for specific range from Table 2.0 below.
  - c. Write value of 0xfffe to Trim Span register, (ie. 40146 for +/-10V).
  - d. Perform steps #4a through #4c to trim span on each range.

##### Trim CJC's:

1. Set the input signal to -----.
2. Set all module channels to the J-Thermocouple range.
3. Use the DGH Utility Software or a Modbus Master program to perform steps #4 & #5.
4. Trim Zero on each input channel
  - a. Write a value of 0x0002h to Control Register 40241 to Write-Enable the module.
  - b. Write a value of 0x0000h to register 40114.
5. Apply input signal to each channel from Table x.xx.
  - a. Wait 1 minute.
  - b. Write a value of 0x0002h to Control Register 40241 to Write-Enable the module.
  - c. Write a value of 0xfffe



### **Trim Thermocouples:**

1. Set the input signal to -----.
2. Set all module channels to the J-Thermocouple range.
3. Use the DGH Utility Software or a Modbus Master program to perform steps #4 & #5.
4. Trim Zero on each input channel
  - a. Write a value of 0x0002h to Control Register 40241 to Write-Enable the module.
  - b. Write a value of 0x0000h to register 40114.
5. Apply input signal to each channel from Table x.xx.
  - a. Wait 1 minute.
  - b. Write a value of 0x0002h to Control Register 40241 to Write-Enable the module.
  - c. Write a value of 0xfffe

#### 4.4.5 Seven Channel Voltage, Thermocouple and Current Input Calibration Tables:

<b>Seven Channel Range Register Values</b>			
<b>Channel</b>	<b>Range Control</b>	<b>Range Values</b>	
Channel 1	40097	00	Disabled
Channel 2	40098	01	+/-10V
Channel 3	40099	02	+/-5V
Channel 4	40100	03	+/-1V
Channel 5	40101	04	+/-0.1V
Channel 6	40102	05	+/-0.05V
Channel 7	40103	06	+/-0.025V
		21	J-Type TC
		22	K-Type TC
		23	T-Type TC
		24	E-Type TC
		25	R-Type TC
		26	S-Type TC
		27	B-Type TC
		28	C-Type TC

**Table 1.0** Register Setup Values.

<b>Trim Zero Registers and Calibration Values</b>		
<b>Range</b>	<b>Register</b>	<b>Value</b>
+/-10Vdc	40114	0000
+/-5Vdc	40115	0000
+/-1Vdc	40116	0000
+/-0.1Vdc	40117	0000
+/-0.05Vdc	40118	0000
+/-0.025Vdc	40119	0000

**Table 2.0** Trim Zero Registers and Values.

<b>Trim Span Registers and Calibration Values</b>		
<b>Range</b>	<b>Register</b>	<b>Value</b>
+/-0.025Vdc	40151	FFFE
+/-0.05Vdc	40150	FFFE
+/-0.1Vdc	40149	FFFE
+/-1Vdc	40148	FFFE
+/-5Vdc	40147	FFFE
+/-10Vdc	40146	FFFE

**Table 3.0** Trim Span Registers and Values.

<b>CJC Calibration Registers and Values</b>			
<b>Channels</b>	<b>Register</b>	<b>Increase Value</b>	<b>Decrease Value</b>
0..3	40129	0001	0000
4..6	40130	0001	0000

**Table 4.0** Trim CJC Registers and Values.

#### 4.4.6 D8400 Current Channel Enable:

##### Overview

The following information details how to open the D8400 module and enable or disable current channels.

##### Default from the Factory

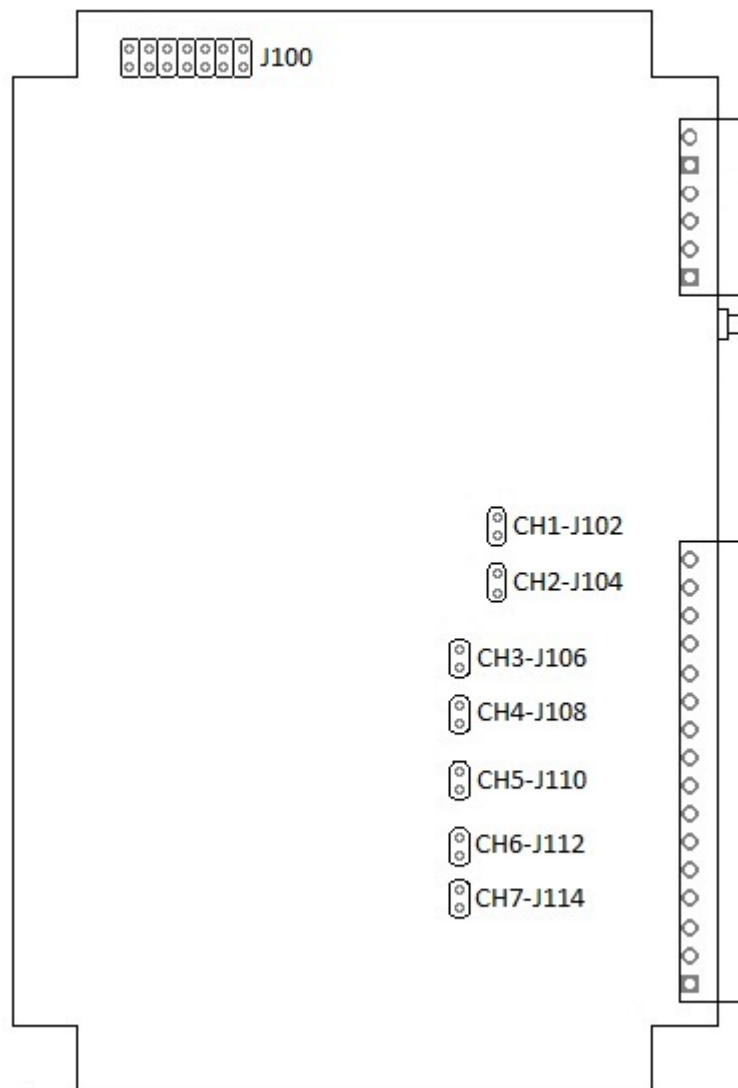
No current enabling jumpers are installed at the factory. All channels are initialized as voltage inputs.

##### Open the Module

Remove the top cover of the D8400 module by unscrewing the four screws on the top cover. With the cover removed, locate J100, a storage strip that contains up to seven unused jumpers. Then locate the CH1 through CH7 jumper strips that enable current channels.

##### Move the Jumpers

To enable any channel as a current input channel, simply move a jumper from J100 to the specific channel jumper strip. To disable a current input channel, simply move the jumper from the channel jumper strip back to J100. See the image below for the location of the pin strips versus channels.





## 4.5 D8500 Two Channel Analog Output Module

### Overview

The D8500 series analog output module contains two 12-bit analog outputs for controlling process control devices. Each analog output signal can be configured as either a voltage or current output. Two voltage ranges and two current ranges can be selected for maximum flexibility to control many different process control devices.

### Analog Outputs

The D8500 series analog outputs can be configured as either voltage outputs or current outputs.

### Features and Register Assignments

The D8500 series modules contain many user-selectable features. The user can select all features such as baud rate, parity type, power-on “safe” analog output value and communications watchdog timer interval. The complete list of features is illustrated in the [“Two Channel Analog Output Register Assignments”](#) register map below. The register map format is used for consistency with the Modbus RTU protocol. The register map contains the register numbers in decimal format, register description, acceptable data values, and list of what each value means. These registers can be written to using most any Modbus master program or using the DGH D6000 series utility software.

**Note:** All Modbus Register values in the tables below are represented as “decimal” numbers.

### Factory Initial Values

The D8500 series analog output modules are initialized at the factory with a set of “Initial Values”. A complete list of factory [“Initial Values”](#) can be found in the table below. For reference purposes, the Modbus Slave address is preset to hex 0x01, the baud rate is 9600, Parity type is None and the Stop Bits is “1”.

### Communications Watchdog Timer

The D500 series digital output module contains a user-programmable communications watchdog timer. The communications watchdog timer can be used to force the analog output signals to a known “safe” condition in the event that communications are lost to the module. The known “safe” condition can be user-programmed into the module Initial Value register.

### Connector Pin Designations

The D8500 series module uses two 3.81mm removable plugs for connecting signals to the module. One six-pin connector is for the power supply and the second eight-pin connector is used to connect analog output signals to control devices. The [pin designations](#) for each connector are printed on the module label and are listed in a table below.

#### 4.5.1 Two Channel Analog Output Pin Assignments and Specifications

##### Connections

##### Power & Serial Communications

<u>Pin Number</u>	<u>Pin</u>	<u>Designator</u>
1	GND	- Power Supply
2	+VS	+ Power Supply

##### Analog Output Pin Assignments

<u>Pin Number</u>	<u>Pin</u>	<u>Designator</u>
1	CH1 +I	#1-+Current Out
2	CH1 -I	#1- -Current Out
3	CH1 +V	#1- +Voltage Out
4	CH1 -V	#1- -Voltage Out
5	CH2 +I	#2- +Current Out
6	CH2 -I	#2- -Current Out
7	CH2 +V	#2- +Voltage Out
8	CH2 -V	#2- -Voltage Out

##### Notes:

1. Each channel can be used as either a voltage output or a current output. But not both at the same time.
2. When using a channel as a current output there must be no connections on +/-V Output pins.

##### Specifications

Analog Outputs	2 Channels
User Selectable Input Ranges	
Voltage Ranges	0-10V, +/-10V,
Current Ranges	4-20mA, 0-20mA
Protocol	
Serial	Modbus RTU
Power Supply	
Voltage	+10-30Vdc
Power	2.1W
Connectors	
Spacing	3.81mm
Max Wire Size	14-24 AWG
Max Current	8 Amperes
Serial LED Displays	
Transmit (Top)	Serial TxData
Receive (Bottom)	Serial RxData

#### 4.5.2 Two Channel Analog Output Register Assignments

Register	Description	Functions	Value	Description
40001	Slave Address	R/WP	1-DF	<b>Factory set to 0x0001.</b>
40002	UART Setup	R/WP	5-9	<b>Factory set to 0x0035.</b>
40003	Modbus Delays	R/WP	0-303F	<p><u>Bits 0-7</u> The Response Delay in milliseconds. This is required when the RS-485 adapter cannot tri-state immediately after the last character is transmitted from the host. Maximum value is 63mS. Factory default value is 3.</p> <p><u>Bits 8-15</u> The End of Query Delay in milliseconds (48mS max). This is an additional time that the module will wait prior to marking the end of the message. Slower host computers may not be able transmit a continuous message stream, thereby creating gaps between characters exceeding the normal 3.5 character times limit. Factory default value is 0. <b>Factory set to 0x0003.</b></p>
40033	Software Version	R		<b>Factory set from data value in source code.</b>
40049	Analog Out CH1	R/W	0-FFFF	0= -FS, FFFF= +FS, Set analog output, DAC value after slewing.
40050	Analog Out Ch2	R/W	0-FFFF	See Register 49.
40065	Slope CH1	R/W	0-12	<p>On the fly slope. Reset default slope from EEPROM.</p> <p>0 – Immediate 1 – 0.156% Span/s 2 – 0.310 3 – 0.625 4 – 1.25 5 – 2.50 6 – 5 7 – 10 8 – 20 9 – 40 A – 80 B – 160 C – 320 D – 640 E – 1280 F – 2560 10 – 5120 11 – 10240 12 – 20480</p> <p><math>V/S = \% \text{ Span/s (Span)}/100</math> i.e. for slope= 10, <math>5120(10)/100=512V/S</math> <b>Factory set to 0x0000.</b></p>
40066	Slope CH2	R/W	0-1FFFF	<p>On the fly slope.</p> <p><b>Factory set to 0x0000.</b></p>
40097	ADC Read CH1	R	0-FFFF	Readback CH1, 8 bit resolution.
40098	ADC Read CH2	R		Readback CH2, 8 bit resolution.
40113	Present Output CH1	R	0-FFFF	Normalized present DAC value. Present Output may differ from Setpoint, if output has not reached to its final value.
40114	Present Output CH2	R	0-FFFF	Normalized present DAC value. Present Output may differ from Setpoint, if output

				has not reached to its final value.
40144	Watchdog Time-out Interval	R/WP	0-FFFF	The interval of time in seconds that must lapse after the last communication to the module or since power was applied, before the Watchdog is triggered and the outputs are set to the Initial Value. Effective immediately. The purpose of the Watchdog Timer is to force the analog outputs to a known safe value in the event of a host or communications link failure. The Watchdog Timer may be disabled, by setting the value to FFFF Hex. Accuracy is 10%. <b>Factory set to 0xFFFF.</b>
40145	Setup CH1	R/WP		Holds Channel 1 range and slope setup. On the fly slope changed immediately. Setup change is immediate. <u>Bits 0-2</u> 0 – 0-10V 1 – +/-10V 2 – 4-20mA 3 – 0-20mA  <u>Bits 3-7</u> 0 – Immediate 1 – 0.156% Span/s 2 – 0.31 3 – 0.625 4 – 1.25 5 – 2.50 6 – 5 7 – 10 8 – 20 9 – 40 A – 80 B – 160 C – 320 D – 640 E – 1280 F – 2560 10 – 5120 11 – 10240 12 – 20480 V/S=% Span/s (Span)/100 i.e. for slope= 10, 5120(10)/100=512V/S <b>Factory set to 0x0000.</b>
40146	Initial Value CH1	R/WP	0-FFFF	Power-Up or Reset analog output value. New values written to this register require a reset to activate. <b>Factory set to 0x0000.</b>
40147	Setup CH2	R/WP		Holds Channel 2 range and slope setup. <b>Factory set to 0x0000.</b>
40148	Initial Value CH2	R/WP	0-FFFF	Power-Up or Reset analog output value. New values written to this register require a reset to activate. <b>Factory set to 0x0000.</b>
40177	Increase Min Output Calibration	WP	0-1	Increases output of selected channel, by 1 LSB. Output must be previously set to minimum value in table xx. Repeat as needed get the desired output. The effect is immediate. <b>Write 0 for Channel 1</b>



				<b>Write 1 for Channel 2</b>
40178	Decrease Min Output Calibration	WP	0-1	Decreases output of selected channel, by 1 LSB. Output must be previously set to minimum value in table xx. Repeat as needed to get desired output. The effect is immediate. <b>Write 0 for Channel 1</b> <b>Write 1 for Channel 2</b>
40179	Increase Max Output Calibration	WP	0-1	Increases output of selected channel, by 1 LSB. Output must be previously set to maximum value in table xx. Repeat as needed get the desired output. The effect is immediate. <b>Write 0 for Channel 1</b> <b>Write 1 for Channel 2</b>
40180	Decrease Max Output Calibration	WP	0-1	Decreases output of selected channel, by 1 LSB. Output must be previously set to maximum value in table xx. Repeat as needed to get desired output. The effect is immediate. <b>Write 0 for Channel 1</b> <b>Write 1 for Channel 2</b>
40181	Trim ADC	WP	0-1	<b>Forces output of selected channel (data value) to minimum and maximum values momentarily</b> , and calibrates readback ADC to coincide. Output is then restored to original value when calibration is completed. The effect is immediate.
<b>40241</b>	<b>Control</b>	<b>W</b>		<b>0</b> – Normal operation (NOP) <b>1</b> – Remote Reset (write protected) <b>2</b> – Write Enable <b>5</b> – Initialize Host communications setup

#### **Functions:**

R      Read Only  
R/W    Read/Write  
WP    Write-Protected

#### **Notes:**

1. Values written to Registers 40049 and 40050 **must not** be proceeded by a Write-Protect command.

#### 4.5.3 Two Channel Analog Output Initial Factory Values

<b>Module Parameter</b>	<b>Value</b>
Slave Address	1
Modbus Response Delay	3mS
Modbus Query Delay	0mS
Conversion Rate	60Hz
Channel 0 on the fly slope	Immediate
Channel 1 on the fly slope	Immediate
Watchdog Timer Low Word	0xffff, = Disabled
Channel 0 Range	0-10Vdc
Channel 0 Slope	Immediate
Channel 0 Initial Value	0Vdc
Channel 1 Range	0-10Vdc
Channel 1 Slope	Immediate
Channel 1 Initial Value	0Vdc

## 4.5.4 Analog Voltage Output Calibration Procedure

### Required Equipment

1. Computer running the DGH Utility Software or another Modbus Master program.
2. A NIST traceable Digital multimeter (DMM) with +/-10Vdc range.

### Setup Steps – Perform Calibration Steps in Order Listed:

1. Allow unit to warm up for 15 minutes.
2. Connect positive (+) lead of the DMM to the Ch1+Vout terminal.
3. Connect negative (-) lead of the DMM to the Ch1 IsoGnd terminal.
4. Install the DGH Utility Software or another Modbus Master Program to communicate with, and calibrate with the module via serial port or a TCP/IP connection.
5. Remove all connections to the +Iout and –Iout terminals on Ch1 and Ch2.

### Trim Negative Full Scale:

1. Using the DGH Utility Software configure both Ch1 and Ch2 analog output ranges to the +/-10Vdc range. See Table 1.0 below for register and data values.
2. Use the DGH Utility Software set Ch1 and Ch2 analog outputs to their –Full Scale value. See Table 2.0 below for register and data values.
3. Trim Negative Full Scale.
  - a. Write a value of 0x0002h to Control Register 40241 to Write-Enable the module.
  - b. Trim the Negative Full Scale output using the register and data value in Table 3.0 below. Write value the channel value to the proper register to increase or decrease the analog output signal to match the –Full Scale output value.
4. Move the DMM leads to the Ch2 +Vout and IsoGnd terminals.
5. Repeat steps 3a and 3b to trim the negative full-scale output of Ch2.

### Trim Positive Full Scale:

1. Move the DMM leads to the Ch1 +Vout and –Vout terminals.
2. Use the DGH Utility Software set Ch1 and Ch2 analog outputs to their +Full Scale value. See Table 2.0 below for register and data values.
3. Trim Positive Full Scale.
  - a. Write a value of 0x0002h to Control Register 40241 to Write-Enable the module.
  - b. Trim the Positive Full Scale output using the register and data value in Table 4.0 below. Write value the channel value to the proper register to increase or decrease the analog output signal to match the +Full Scale output value.
4. Move the DMM leads to the Ch2 +Vout and IsoGnd terminals.
5. Repeat steps 3a and 3b to trim the positive full-scale output of Ch2.
6. Using the DGH Utility Software set the Ch1 and Ch2 analog output ranges to +10Vdc range. Repeat steps above calibrate the 0-10Vdc range.

## 4.5.5 Analog Current Output Calibration Procedure

### Required Equipment

1. Computer running the DGH Utility Software or another Modbus Master program.
2. A NIST traceable Digital multimeter (DMM) with 0-20mA range.

### Setup Steps – Perform Calibration Steps in Order Listed:

1. Allow unit to warm up for 15 minutes.
2. Connect positive (+) lead of the DMM to the Ch1 +Iout terminal.
3. Connect negative (-) lead of the DMM to the Ch1 -Iout terminal.
4. Install the DGH Utility Software or another Modbus Master Program to communicate with, and calibrate with the module via serial port or a TCP/IP connection.
5. Remove all connections to the +Vout and –Vout terminals on Ch1 and Ch2.

### Trim Negative Full Scale:

1. Using the DGH Utility Software configure both Ch1 and Ch2 analog output ranges to the 0-20mA range. See Table 1.0 below for register and data values.
2. Use the DGH Utility Software set Ch1 and Ch2 analog outputs to their –Full Scale value. See Table 2.0 below for register and data values.
3. Trim Negative Full Scale.
  - a. Write a value of 0x0002h to Control Register 40241 to Write-Enable the module.
  - b. Trim the Negative Full Scale output using the register and data value in Table 3.0 below. Write value the channel value to the proper register to increase or decrease the analog output signal to match the –Full Scale output value.
4. Move the DMM leads to the Ch2 +Iout and –Iout terminals.
5. Repeat steps 3a and 3b to trim the negative full-scale output of Ch2.

### Trim Positive Full Scale:

1. Move the DMM leads to the Ch1 +Iout and –Iout terminals.
2. Use the DGH Utility Software set Ch1 and Ch2 analog outputs to their +Full Scale value. See Table 2.0 below for register and data values.
3. Trim Positive Full Scale.
  - a. Write a value of 0x0002h to Control Register 40241 to Write-Enable the module.
  - b. Trim the Positive Full Scale output using the register and data value in Table 4.0 below. Write value the channel value to the proper register to increase or decrease the analog output signal to match the +Full Scale output value.
4. Move the DMM leads to the Ch2 +Iout and –Iout terminals.
5. Repeat steps 3a and 3b to trim the positive full-scale output of Ch2.
6. Using the DGH Utility Software set the Ch1 and Ch2 analog output ranges to 4-20mA range. Repeat steps above to calibrate the 4-20mA range.

#### 4.5.6 Analog Output Calibration Register Tables and Values

<u>Channel Range Registers and Values</u>		
<u>Channel</u>	<u>Range Control</u>	<u>Range Values</u>
Channel 1	40145	0 = 0-10Vdc 1 = +/-10Vdc 2 = 4-20mA 3 = 0-20mA
Channel 2	40147	

**Table 1.0** Analog Output Range Registers and Values.

<u>Analog Output Registers</u>			
<u>Channel</u>	<u>Register</u>	<u>Force -FS Output</u>	<u>Force +FS Output</u>
Channel 1	40049	0000	FFFF
Channel 2	40050	0000	FFFF

**Table 2.0** Analog Output Register and Calibration Values.

<u>Trim Negative Full Scale Calibration Registers and Values</u>			
<u>Register</u>	<u>-Full Scale Output Adjust</u>	<u>CH1</u>	<u>CH2</u>
40177	Increase Signal	0000	0001
40178	Decrease Signal	0000	0001

**Table 3.0** Trim Negative Full Scale Calibration Registers and Values.

<u>Trim Positive Full Scale Calibration Registers and Values</u>			
<u>Register</u>	<u>+Full Scale Signal Adjust</u>	<u>CH1</u>	<u>CH2</u>
40179	Increase Signal	0000	0001
40180	Decrease Signal	0000	0001

**Table 4.0** Trim Positive Full Scale Calibration Registers and Values.

## 4.6 D8710 - Fifteen Bit Digital Input Module

### Overview

The D8710 series module contains fifteen digital inputs to monitor process signals such as logic-level status, relay contacts, switch closures, and dry-contacts.

### Digital Inputs

The D8710 digital input bits accept signals between +/-30Vdc without damage and contain internal 10K pull-up resistors for direct connection to dry-contacts.

The digital input logic level switching levels are less than 1.0Vdc for logic “0” and greater than +3.5Vdc for a logic “1”.

### Features and Register Assignments

The D8710 series digital input modules contain many user-selectable features. The user can select all features such as device address, baud rate and parity type. The complete list of features is illustrated in the [“Fifteen Bit Digital I/O Register Assignments”](#) map below. The register map format is used for consistency with the Modbus RTU protocol. The register map contains the register numbers in decimal format, register description, acceptable data values, and list of what each value means. These registers can be written to using most any Modbus master program or using the DGH D6000 series utility software.

**Note:** All Modbus Register values in the tables below are represented as “decimal” numbers.

### Connector Pin Designations

The D8710 series module uses two 3.81mm removable plugs for connecting signals to the module. One two-pin connector is for the power supply and the second sixteen-pin connector is used to connect digital signals to the module. The [pin designations](#) for each connector are printed on the module label and are listed in a table below.

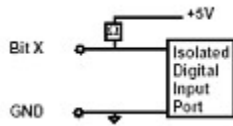
## 4.6.2 Fifteen Bit Digital Input Specifications

### Connections

#### Power and Serial Communications

Pin Number	Pin	Designator
1	GND	- Power Supply
2	+VS	+ Power Supply

### Typical Input



### Digital Input Pin Assignments

Bit Number	Pin Designator
1	B01
2	B02
3	B03
4	B04
5	B05
6	B06
7	B07
8	B08
9	B09
10	B10
11	B11
12	B12
13	B13
14	B14
15	B15
16	ISO. GND

### Specifications

Digital Inputs	15
Input Bit	
Internal Pull-up	10K to +5Vdc
Max Voltage	+/-30Vdc
Logic '0'	<1.0Vdc
Logic '1'	>3.5Vdc

Isolation	
GND to IGND	500Vrms

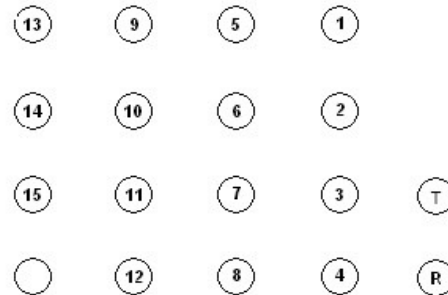
Protocol	
Serial	Modbus RTU

Power Supply	
Voltage	+10-30Vdc
Power	0.75W

Connectors	
Spacing	3.81mm
Max Wire Size	14-24 AWG
Max Current	8 Amperes

LED Designators	
01-15	Bit LO = On
F	Always Off
T	Serial TxD
R	Serial RxD

### LED Display



Digital Input/Output LEDs

#### 4.6.3 Fifteen Bit Digital Input Initial Factory Values

<b>Module Parameter</b>	<b>Value</b>
Slave Address	1
Modbus Response Delay	3mS
Modbus Query Delay	0mS



#### 4.6.4 Fifteen Bit Digital Input Register Assignments

Register	Description	Functions	Value	Description
40001	Slave Address	R/WP	1-DF	<b>Factory set to 0x0001.</b>
40002	UART Setup	R/WP		<b>Factory set to 0x0035.</b>
40003	Modbus Delays	R/WP	0-303F	<p><u>Bits 0-7</u> The Response Delay in milliseconds. This is required when the RS-485 adapter cannot tri-state immediately after the last character is transmitted from the host. Maximum value is 63mS. Factory default value is 3.</p> <p><u>Bits 8-15</u> The End of Query Delay in milliseconds (48mS max). This is an additional time that the module will wait prior to marking the end of the message. Slower host computers may not be able transmit a continuous message stream, thereby creating gaps between characters exceeding the normal 3.5 character times limit. Factory default value is 0. <b>See Note 2.</b> <b>Factory set to 0x0003.</b></p>
40033	Software Version	R		<b>Factory set, Code Version.</b>
<b>40241</b>	<b>Control Register</b>	<b>W</b>		<p><b>0</b> – Normal operation (NOP)  <b>1</b> – Remote Reset (write protected)  <b>2</b> – Write Enable  <b>3</b> – Synchronous Data sample  <b>5</b> – Init Host Com Setup</p>

#### Functions:

R      Read Only  
R/W    Read/Write  
WP     Write-Protected

Discrete Coil (DI) Mapping Table			
Address (hex)	Channel #	Coil #	Using Function Codes 01 and 02
0	0	1	"
1	1	2	"
2	2	3	"
:			
15	15	15	"
100	0	1	Sync Input Data
101	1	2	"
102	2	3	"
:			"
10E	14	15	"

## 4.7 D8720 - Fifteen Bit Digital Output Module

### Overview

The D8720 series digital output module contains fifteen digital outputs for controlling process control devices such as relays, lamps, annunciators and other ON/OFF devices.

### Digital Outputs

The D8720 series open-collector digital outputs can be pulled up to +30Vdc max and each bit can sink up to 100mA. The open-collector output provides maximum flexibility to control many different process control devices.

### Features and Register Assignments

The D8720 series digital output modules contain many user-selectable features. The user can select all features such as baud rate, parity type, power-on bit state and communications watchdog timer interval. The complete list of features is illustrated in the [“Fifteen Bit Digital I/O Register Assignments”](#) register map below. The register map format is used for consistency with the Modbus RTU protocol. The register map contains the register numbers in decimal format, register description, acceptable data values, and list of what each value means. These registers can be written to using most any Modbus master program or using the DGH D6000 series utility software.

**Note:** All Modbus Register values in the tables below are represented as “decimal” numbers.

### Factory Initial Values

The D8720 series digital output modules are initialized at the factory with a set of “Initial Values”. A complete list of factory “Initial Values” can be found in the table below. For reference purposes, the Modbus Slave address is preset to hex 0x01, the baud rate is 9600, Parity type is None and the Stop Bits is “1”.

### Communications Watchdog Timer

The D8720 series digital output module contains a user-programmable communications watchdog timer. The communications watchdog timer can be used to force the digital outputs to a known “safe” condition in the event of a communications lost to the module. The known “safe” condition can be user-programmed into the module Initial Value register.

### Connector Pin Designations

The D8720 series module uses two 3.81mm removable plugs for connecting signals to the module. One two-pin connector is for the power supply and second sixteen-pin connector is used to connect digital signals to the module. The [pin designations](#) for each connector are printed on the module label and are listed in a table below.

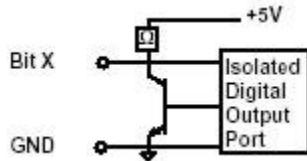
## 4.7.2 Fifteen Bit Digital Output Specifications

### Connections

#### Power and Serial Communications

<u>Pin Number</u>	<u>Pin</u>	<u>Designator</u>
1	GND	- Power Supply
2	+VS	+ Power Supply

### Typical Output Circuit



### Digital Output Pin Assignments

<u>Bit Number</u>	<u>Pin Designator</u>
1	B01
2	B02
3	B03
4	B04
5	B05
6	B06
7	B07
8	B08
9	B09
10	B10
11	B11
12	B12
13	B13
14	B14
15	B15
16	ISO. GND

### Specifications

Digital Outputs	15
Output Bit	
Open-Collector	30Vdc, 100mA
Vsat	0.3V @ 100mA
Short Circuit	500mA max
Type	Sinking

Isolation	
GND to IGND	500Vrms

Watchdog Timer	
Range	0 to 655.35 Sec
Resolution	0.35 Sec

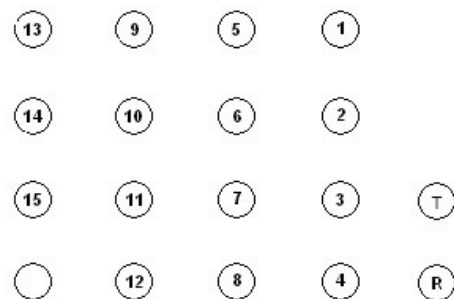
Protocol	
Serial	Modbus RTU

Power Supply	
Voltage	+10-30Vdc
Power	1.0W

Connectors	
Spacing	3.81mm
Max Wire Size	14-24 AWG
Max Current	8 Amperes

LED Designators	
01-15	Bit LO = On
F	Always Off
T	Serial Tx D
R	Serial Rx D

### LED Display



Digital Input/Output LEDs

#### 4.7.3 Fifteen Bit Digital Output Initial Factory Values

<b>Module Parameter</b>	<b>Value</b>
Slave Address	1
Modbus Response Delay	3mS
Modbus Query Delay	0mS
Digital Output Initial Value	0x0000 = All Outputs Off
Watchdog Timer Low Word	0xffff, = Disabled

#### 4.7.4 Fifteen Bit Digital Output Register Assignments

Register	Description	Functions	Value	Description
40001	Slave Address	R/WP	1-DF	<b>Factory set to 0x0001.</b>
40002	UART Setup	R/WP		<b>Factory set to 0x0035.</b>
40003	Modbus Delays	R/WP	0-303F	<p><u>Bits 0-7</u> The Response Delay in milliseconds. This is required when the RS-485 adapter cannot tri-state immediately after the last character is transmitted from the host. Maximum value is 63mS. Factory default value is 3.</p> <p><u>Bits 8-15</u> The End of Query Delay in milliseconds (48mS max). This is an additional time that the module will wait prior to marking the end of the message. Slower host computers may not be able transmit a continuous message stream, thereby creating gaps between characters exceeding the normal 3.5 character times limit. Factory default value is 0. <b>See Note 2.</b> <b>Factory set to 0x0003.</b></p>
40033	Software Version	R		<b>Factory set, Code Version.</b>
40096	Watchdog Timer Interval	R/WP	0.FFFF	<p>The interval of time in seconds that must elapse after the last communication to the module or since the power was applied, before the outputs are set to the Initial Value. The purpose of the Watchdog Timer is to force the digital outputs to a known safe value in the event of a host or communications link failure. The Watchdog Timer may be disabled by setting the value to 0xFFFF hex. <b>Factory set to 0xFFFF.</b></p>
40097	Initial Value	R/WP	0.FFFF	<p>Starting condition of Coils 1-15. Bit #0 is Ch0. Initial Value bits set to Logic 1 will be initialized to the "On" state. Bits set to Logic 0 will be initialized to the "Off" state. <b>Factory Set to 0x0000.</b></p>
40241	Control Register	W		<p><b>0</b> – Normal operation (NOP)  <b>1</b> – Remote Reset (write protected)  <b>2</b> – Write Enable  <b>3</b> – Synchronous Data sample  <b>5</b> – Init Host Com Setup</p>

Discrete Coil (DI) Mapping Table			
Address (hex)	Channel #	Coil #	Using Function Codes 01 and 02
0	0	1	"
1	1	2	"
2	2	3	"
:			
E	E	E	"
100	0	1	Sync Input Data
101	1	2	"
102	2	3	"
:			"
10E	14	15	"

**Functions:**

R	Read Only
R/W	Read/Write
WP	Write-Protected

## 5.0 Modbus Protocol

The D8000 series modules utilize the Modbus RTU protocol for communications. The Modbus RTU protocol is widely supported by almost all commercial data acquisition programs and programmable controllers in the marketplace. This allows for easy connection of a D8000 series module to an existing system or new application.

The D8000 series modules utilize up to eight different functions from within the Modbus RTU protocol. The number of functions utilized by a module depends on the model type and the features it contains.

The Modbus functions allow users to control every function within a module. The functions and their descriptions are listed below. Each function is also outlined in further detail below.

Function	Description
<b>01</b>	Return coil status of discrete output points
<b>02</b>	Read ON/OFF status of discrete inputs in the slave device
<b>03</b>	Read content of holding registers (4X references) in the slave device
<b>04</b>	Read content of input registers (3X references) in the slave device
<b>05</b>	Force state of a single coil (digital output) to either ON or OFF
<b>06</b>	Preset the state of a single register to a specific value
<b>0F</b>	Force the state of a sequence of coils (digital outputs) to a specific state
<b>10</b>	Preset a sequence of registers (4X references) to specific values

### 5.1.1 Function 01 – Read Coil Status

This function returns the coil status of discrete digital output points. A typical function 01 command and response is detailed below:

#### Command Usage:

Address	One Byte Slave Address
Function	One Byte Function Number
Addr HI	Starting Address HI Byte
Addr LO	Starting Address LO Byte
Data HI	Typically ZERO
Data LO	Number of bits, limited to 1..64

#### Response Message:

Address	One Byte Slave Address	
Function	One Byte Function Number	
Register Number	Number of data bytes	Typically returns four bytes
Data HI	Data Coils (27-20)	
Data LO	Data Coils (35-28)	
Data HI	Data Coils (43-36)	
Data LO	Data Coils (51-44)	
Error Check	Two Byte CRC	



### 5.1.2 Function 02 – Read Input Status

Read the ON/OFF status of discrete digital input bits in the slave device. A typical function 02 command and response is detailed below:

#### Command Usage:

Address	One Byte Slave Address
Function	One Byte Function Number
Addr HI	Starting Address HI Byte
Addr LO	Starting Address LO Byte
Data HI	Typically ZERO
Data LO	Number of bits, limited to 1..64

#### Response Message:

Address	One Byte Slave Address	
Function	One Byte Function Number	
Register Number	Number of data bytes	Typically returns four bytes
Data HI	Data Coils (27-20)	
Data LO	Data Coils (35-28)	
Data HI	Data Coils (43-36)	
Data LO	Data Coils (51-44)	
Error Check	Two Byte CRC	

### 5.1.3 Function 03 – Read Holding Registers

This function returns the contents of hold registers (4X references) in the slave device. A typical function 03 command and response is detailed below:

#### Command Usage:

Address	One Byte Slave Address
Function	One Byte Function Number
Addr HI	Starting Register Address HI Byte
Addr LO	Starting Register Address LO Byte
Data HI	Typically ZERO
Data LO	Number of registers

#### Response Message:

Address	One Byte Slave Address	
Function	One Byte Function Number	
Register Number	Number of data bytes	Typically returns two bytes
Data HI	HI Byte (8-bits)	
Data LO	LO Byte (8-bits)	
Error Check	Two Byte CRC	

#### 5.1.4 Function 04 – Read Input Registers

This function returns the contents of hold registers (3X references) in the slave device. A typical function 04 command and response is detailed below:

##### Command Usage:

Address	One Byte Slave Address
Function	One Byte Function Number
Addr HI	Starting Register Address HI Byte
Addr LO	Starting Register Address LO Byte
Data HI	Typically ZERO
Data LO	Number of registers

##### Response Message:

Address	One Byte Slave Address	
Function	One Byte Function Number	
Register Number	Number of data bytes	Typically returns two bytes
Data HI	HI Byte (8-bits)	
Data LO	LO Byte (8-bits)	
Error Check	Two Byte CRC	

### 5.1.5 Function 05 – Force Single Coil

This function forces the state of a single coil (digital output) to either the ON or OFF state. A typical function 05 command and response is listed below:

#### Command Usage:

Address	One Byte Slave Address
Function	One Byte Function Number

Addr HI	Coil Address HI Byte
Addr LO	Coil Address LO Byte

Data HI	Force Data HI
Data LO	Force Data LO

Data Values:	The proper values are either 0xFF00 to enable (Turn ON) a bit or 0x0000 to disable (turn off) a bit.
--------------	------------------------------------------------------------------------------------------------------

#### Response Message:

Address	One Byte Slave Address
Function	One Byte Function Number

Addr HI	Coil Address HI Byte	Same value as in command above.
Addr LO	Coil Address LO Byte	Same value as in command above.

Data HI	Force Data HI	Same value as in command above.
Data LO	Force Data LO	Same value as in command above.

Error Check	Two Byte CRC
-------------	--------------

### 5.1.6 Function 06 – Preset Single Register

This function presets the state of a single register to a specific value. A typical function 06 command and response is listed below:

#### Command Usage:

Address	One Byte Slave Address
Function	One Byte Function Number
Addr HI	Starting Register Address HI Byte
Addr LO	Starting Register Address LO Byte
Data HI	Force Data HI
Data LO	Force Data LO

#### Response Message:

Address	One Byte Slave Address	
Function	One Byte Function Number	
Addr HI	Register Address HI Byte	Same value as in command above.
Addr LO	Register Address LO Byte	Same value as in command above.
Data HI	Preset Data value HI	Same value as in command above.
Data LO	Preset Data value LO	Same value as in command above.
Error Check	Two Byte CRC	

### 5.1.7 Function 0F – Force Multiple Coils

This function is used to force the state of multiple coils (digital outputs) in a digital output module. A typical function 0F command and response is listed below:

#### Command Usage:

Address	One Byte Slave Address
Function	One Byte Function Number
Starting Addr HI	Starting Address HI Byte
Starting Addr LO	Starting Address LO Byte
Qty Coils HI	Number of Coils to Write HI
Qty Coils LO	Number of Coils to Write LO
Byte Count	Number of Data Bytes Transmitted
Force Data HI	Force Data HI
Force Data LO	Force Data LO

#### Response Message:

Address	One Byte Slave Address	
Function	One Byte Function Number	
Starting Addr HI	Starting Address HI Byte	Same value as in command above.
Starting Addr LO	Starting Address LO Byte	Same value as in command above.
Qty Coils HI	Qty Coils HI	Same value as in command above.
Qty Coils LO	Qty Coils LO	Same value as in command above.
Error Check	Two Byte CRC	

### 5.1.8 Function 10 – Preset Multiple Registers

This function presets the state of multiple registers to specific values. A typical function 10 command and response is listed below:

#### Command Usage:

Address	One Byte Slave Address
Function	One Byte Function Number
Starting Addr HI	Starting Register Address HI Byte
Starting Addr LO	Starting Register Address LO Byte
Num Registers HI	Number of Registers to Write HI
Num Registers LO	Number of Registers to Write LO
Byte Count	Number of Data Bytes Transmitted
Data HI	Force Data HI
Data LO	Force Data LO

#### Response Message:

Address	One Byte Slave Address	
Function	One Byte Function Number	
Starting Addr HI	Starting Address HI Byte	Same value as in command above.
Starting Addr LO	Starting Address LO Byte	Same value as in command above.
Num Registers HI	Preset Data value HI	Same value as in command above.
Num Registers LO	Preset Data value LO	Same value as in command above.
Error Check	Two Byte CRC	

### 5.1.9 Modbus Exceptions

The following Modbus Exception (Error Codes) may be returned from the D8000 series modules. These Exception Codes are returned when an error is detected within the command messages transmitted to the module. All Exception Code numbers are indicated below with a detailed description of possible causes.

Modbus Exception Codes		
Exception	Name	Description
01	Illegal Function	This exception code is generated when the module does not recognize the function code.
02	Illegal Data Address	This exception code is generated when the module does not support the specified data address in the command.
03	Illegal Data Value	This exception code is generated if the command data is out of range for the function.
06	Slave Busy	This exception code is generated during the first 3 seconds after the module is reset or powered up.
07	Negative Acknowledge	This exception code is generated if the command tries to write a value into the module EEPROM without being write-enabled first.



## 6.0 D8100 through D8400 Series Modbus Data Values

The D8100 through D8400 series analog input data acquisition modules support the Modbus RTU serial protocol. The analog data values are stored in registers and can be read using two Modbus RTU protocol functions. The analog data values can be read using either Function 03 or Function 04. For discussion purposes - we will use the Function 03 register values when referring to the location of the analog data values.

### 6.1 Data Registers

The first analog input data register for each module is located at register 40049 and there are seven consecutive registers (40049..40055) that contain the module analog data values. The values are stored in consecutive registers for fast reading of all the data values with one Modbus function call.

### 6.2 Data Values

The analog data values are returned as 16-bit unsigned integer numbers that represent the percentage of the full scale analog input range. The numbers range from 0 to 65535, where zero refers to the minus full scale and 65535 refers to the positive full scale value. All values in between are a percentage of the scale between plus and minus full scale.

The analog data values are normally scaled into engineering units within a host supervisory computer data acquisition program. The software would read the value and then perform a numeric calculation to arrive at the proper engineering units. It is important to include the entire analog input range when performing the calculation.

#### Calculate 4-20mA Value

For example, one analog input channel might be selected as a +/-20mA input and used with a 4-20mA transmitter. In order to properly calculate the analog data values then the data value of 0 will equate to the -Full Scale analog input range of -20mA and 65535 will equate to the +Full Scale analog input range of +20mA. All data values between 0 and 65535 will be a percentage of the analog input range(-20mA to +20mA).

#### Calculate a J-Type Thermocouple Temperature Value

In a temperature example, one analog input channel might be selected as a J-Type thermocouple input. In order to properly calculate the temperature data values then the data value of 0 will equate to the -Full Scale analog input range of -200C and 65535 will equate to the +Full Scale analog input range of +760C. All data values between 0 and 65535 will be a percentage of the analog input range(-200 to +760C).

## 7.0 Specifications - General

- Programmable digital filters in analog input modules.
- Max CMV, input to output at 115Vrms, 60hz: 500V rms.
- All setups stored in EEPROM.
- Software disable unused analog input channels.

### Interface

- Communications via Modbus RTU protocol.
- Interface via USB port.

### Power Requirements

- Unregulated +10V to +30Vdc.
- Protected against power supply reversals.

### Environmental

- Temperature Range: Operating -25C to +70C.
- Storage: -25C to +85C.
- Relative Humidity: 0 to 95% non-condensing.

### Warranty

- 12 months on workmanship and material.

### Package, Dimensions and Connectors

- Case: ABS thermoplastic, UL-94-5VA rated.
- Dimensions: 6"x4"x1.5", mounting holes 6.5" on center.
- Connectors: Screw terminal barrier plug (supplied).
- Replace plug with LMI Components 04238 Series.

## MODULE SPECIFICATIONS

### D8100 Voltage Inputs

- Seven differential voltage inputs.
- Ranges: +/-0.025V, +/-0.05V, +/-0.1V, □1V, □5V, □10V.
- 16-bit ADC, 25/20 conversions per second.
- Accuracy: □0.05% of FS max.
- Span Tempco: □50ppm/□C max.
- Input burnout protection to 250 Vac.
- Input impedance: 20M□ min.
- Power requirements: Serial = 1.4W.

### D8200 Current Inputs

- Seven differential current inputs.
- Range: +/-20mA.
- 16-bit ADC, 25/20 conversions per second.
- Accuracy: □0.05% of FS max.
- Span Tempco: □50ppm/□C max.
- Voltage drop: 2.0V max.
- Input Impedance: <100 Ohms (70 typical).
- Power requirements: Serial = 1.4W.

### D8300 Thermocouple Inputs

- Seven differential thermocouple inputs.
- Thermocouple types: J, K, T, E, R, S, B, and C.
- Ranges:

J = -200–760°C	R = 0–1750°C
K = -150–1250°C	S = 0–1750°C
T = -200–400°C	B = 0–1820°C
E = -100–1000°C	C = 0–2315°C
- Thermocouple Accuracy (error from all sources) from 0-40°C ambient:

J, K, T, E = ±1.5°C max.
R, S, B, C = ±3.5°C max (300°C to +F.S.).
- 16-bit ADC, 25/20 conversions per second.
- Input impedance: 20MΩ min.
- Automatic cold junction compensation.
- Lead resistance effect: <40μV per 350Ω.
- Open thermocouple and over range indication.
- Input burnout protection to 250Vac.
- Power requirements: Serial = 1.4W.

### D8400 Voltage, Thermocouple, Current Inputs

- Seven Differential voltage, thermocouple, current inputs.
- Specifications equal to D8100, D8200 and D8300 series.

### D8500 Analog Outputs

- Two analog outputs.
- Programmable voltage or current ranges.
- Voltage Ranges: 0-10Vdc, +/-10Vdc.
- Current Ranges: 0-20mA, 4-20mA.
- 250 conversions per second.
- Accuracy: +/-0.1%
- 12-bit DAC resolution.
- Span Tempco: ±25ppm/°C max.
- Settling Time to 0.1% FS: 1mS.
- Communications Watchdog Timer.
- Current Output Compliance: +/-12Vdc.
- Voltage Output Drive: 5mA max.
- 8-bit ADC Analog output signal readback.
- Isolation 500Vac, output common to system ground.
- Current output burnout protected to 250Vac.
- Power requirements: Serial = 2.1W.

### D8710 Digital Inputs

- 15 Digital Inputs.
- Internal 10K pull-up resistors on each bit.
- Accept direct switch closure.
- Logic "0" = <1Vdc, Logic "1" = >3.5Vdc.
- Input burnout to +/-30Vdc without damage.
- Isolation 500Vac, input common to system ground.
- Power requirements: Serial = 0.75W.

### D8720 Digital Outputs

- 15 Open-collector outputs to 30Vdc, 100mA max.
- Vsat: +0.3Vdc max. at 100mA.
- Short circuit protection to 500mA.
- Communications Watchdog Timer.
- Digital Output update rate, 4.5Hz.
- Isolation 500Vac, output common to system ground.
- Power requirements: Serial = 1.0W.

Specifications are subject to change without notice.

Specifications (typical at +25°C and nominal power supply unless otherwise noted)

## NOTES: